

City of Gainesville, Texas

# Parks & Trails Master Plan

## WHAT IS IT?

The Parks & Trails Master Plan serves as a visionary guide for creating a connected and accessible parks system that enhances the quality of life for all Gainesville residents.

The plan will incorporate community input to identify opportunities for improving park access, quality, and connectivity.

## WHY PLAN?

A Parks & Trails Master Plan will help us identify and prioritize investments in our parks and green spaces.

By planning for the future, we can ensure continued stewardship of these valuable community assets and preserve the natural beauty that makes Gainesville special.

## WHO IS INVOLVED?

Gainesville residents and stakeholders will help identify and prioritize challenges and opportunities. An Advisory Committee of community leaders will help facilitate the direction of the plan.



**LET'S SHAPE OUR FUTURE  
TOGETHER** ➤

**FACILITATED BY:**



**Valley Quest**  
DESIGN

URBAN**3**





## PARK PROGRAMMING PUBLIC INPUT RANKINGS

(1 = Top Priority, 9 = Lower Priority)



**1. TRAILS**



**2. PASSIVE RECREATION**



**3. ZOO**



**4. CONNECTIVITY**



**5. SPORTS FACILITIES**



**6. PLAYGROUNDS**



**7. OUTDOOR FITNESS**



**8. WATER FEATURES**



**9. PUBLIC ART/MONUMENTS**





## PARK PROGRAMMING PUBLIC INPUT PRIORITIES COMMENT-SUMMARY

1. TRAILS		2. PASSIVE RECREATION		3. ZOO	4. CONNECTIVITY
<b>MULTI-USE</b> <ul style="list-style-type: none"><li>• Connect city center, schools, neighborhoods, shopping centers.</li><li>• Include separated trail on bypass road.</li><li>• Enhance trailhead facilities.</li><li>• Improve safety with adequate lighting.</li><li>• Address loose dog problems along trails.</li><li>• Add more trails and loops to existing parks.</li></ul>		<b>AMPHITHEATER</b> Locate at the Zoo		<b>ENHANCED EXHIBITS</b> <ul style="list-style-type: none"><li>• The Zoo looks like a farmer planned it; enhance those enclosures.</li><li>• Expand Zoo further to the west.</li><li>• Expand Zoo exhibits to other park locations such as Edison Park?</li></ul>	<b>GREEN CORRIDORS</b> <ul style="list-style-type: none"><li>• Use abandoned railway easements (e.g. old RR spur bending west from Moran/Dixon to I-35 frontage road)</li><li>• Connect all 4 parts of the city.</li></ul>
<b>NATURE</b> Develop Blue Trails facilities and network.		<b>COMMUNITY SPACES &amp; GARDENS</b> <ul style="list-style-type: none"><li>• Sponsor Gardening Clubs and neighborhood Community Gardens.</li><li>• Pollinator gardens featuring Texas Native and Adapted plants would be great!</li><li>• Open Stanford House to additional recreational use and groups; plenty of room in a well-maintained facility.</li></ul>		<b>“CLOSE ENCOUNTERS” CAFE</b> No comments made	<b>PEDESTRIAN BRIDGES</b> Locate at the NE corner of Leonard Park (across California Street at frontage road or to connect to Moffit Park further west? Ped. underpass connection at Elm Fork might be most viable)
<b>FOREST</b> <ul style="list-style-type: none"><li>• Develop trails along Elm Creek and Pecan Creek.</li><li>• Provide more gravel trails rather than concrete as a lower-impact alternative.</li></ul>		<b>LARGE LAWN AREAS</b> <ul style="list-style-type: none"><li>• Pocket Prairies and low-water / low-mow landscaping could improve small areas around all parks.</li><li>• Site a Pocket Park on Commerce.</li></ul>		<b>ENHANCED EVENT SPACE</b> <ul style="list-style-type: none"><li>• Develop an Education/Event Center for lectures, classes, and camps.</li><li>• Construct an Amphitheater.</li></ul>	<b>UNDER/OVERPASS PED. CONNECTIONS</b> Locate at all grade-separated roadways and water channel undercrossings
<b>MULTI-LEVEL</b> Widen existing concrete trails with gravel extensions to increase capacity.		<b>SEATING &amp; FURNISHINGS</b> <ul style="list-style-type: none"><li>• Good, Comfortable seating</li><li>• More grills in parks</li><li>• Permanent public restrooms in all parks and public spaces at humane distance intervals</li></ul>			<b>WAYFINDING SIGNAGE</b> No comments made
5. SPORTS FACILITIES		6. PLAYGROUNDS		8. WATER FEATURES	9. PUBLIC ART / MONUMENTS
<b>PICKLEBALL / TENNIS</b> Expand Moffit Park to the current transfer station.		<b>NATURE PLAY SLIDES/CLIMBERS</b> No comments made		<b>AQUATIC FACILITIES</b> <ul style="list-style-type: none"><li>• Lap Swimming requested</li><li>• Redirect treated water from the wastewater plant to create upriver water features or a lazy river.</li></ul>	<b>PHOTO OPPORTUNITY PATRIOTIC ART MEMORIAL DISPLAYS</b> No comments made
<b>SOFTBALL / BASEBALL ENHANCED SPECTATOR SEATING</b> No comments made		<b>LANDFORMS</b> Create a new Landform playground north of US 82		<b>PEACEFUL WATER FEATURES</b> Suggested location at Heritage Park	<b>NATURE / DOG PARK SCULPTURES</b> <ul style="list-style-type: none"><li>• Suggested location for nature sculpture at intersection of Eldritch and Ritchey.</li></ul>
<b>SOCCER</b> <ul style="list-style-type: none"><li>• More basketball courts</li><li>• More disc golf courses</li></ul>		<b>LARGE SHADED PLAY STRUCTURES</b> <ul style="list-style-type: none"><li>• Shade structures are needed at Jaycee/ Pecan Creek Park playgrounds.</li><li>• Don't care about style but replace hot metal and aging equipment at Heritage, Edison, and Jaycee Parks</li></ul>		<b>CLASSIC PARK FOUNTAIN and/or SPLASHPAD</b> No comments made	<b>GENERAL LOCATION SUGGESTIONS</b> <ul style="list-style-type: none"><li>• Farmers Market</li><li>• Along Commerce Street</li><li>• Heritage Park</li></ul>
<b>GENERAL LOCATION SUGGESTIONS</b> <ul style="list-style-type: none"><li>• Jaycee Park</li><li>• Pond along Pecan Creek</li><li>• Edison Park</li><li>• Heritage Park</li></ul>		<b>GENERAL LOCATION SUGGESTIONS</b> <ul style="list-style-type: none"><li>• Jaycee Park</li><li>• Pond along Pecan Creek</li><li>• Edison Park</li><li>• Heritage Park</li></ul>		<b>GENERAL LOCATION SUGGESTIONS</b> <ul style="list-style-type: none"><li>• Jaycee Park</li><li>• Pond along Pecan Creek</li><li>• Keneteso Park</li><li>• Medal of Honor Host City Park</li></ul>	





## PARK PROGRAMMING GOALS & ASPIRATIONS

### CRITICAL

[lifecycle replacement and repairs]

1. **CRITICAL:** MAINTAIN WHAT WE HAVE

2. **CRITICAL:** PURSUE PROPERTIES IN UNDERSERVED AREAS

3. **CRITICAL:** INCREASE OUTDOOR COMFORT LEVELS



### SUSTAINABLE

[upgrade/renovate through additional funding]

1. **SUSTAINABLE:** IMPROVE WHAT WE HAVE

2. **SUSTAINABLE:** INTEGRATE ACTIVE TRANSPORTATION

3. **SUSTAINABLE:** EXPAND SHADE/COOLING STRATEGY



### VISIONARY

[high-budget upgrades and expansion if fiscally unconstrained]

1. **VISIONARY:** LINK PARKS TO CREATE DOWNTOWN GREEN CORRIDORS

2. **VISIONARY:** DEVELOP ALL-NEW PARKS

3. **VISIONARY:** INCREASE RECREATION PROGRAM CAPABILITY



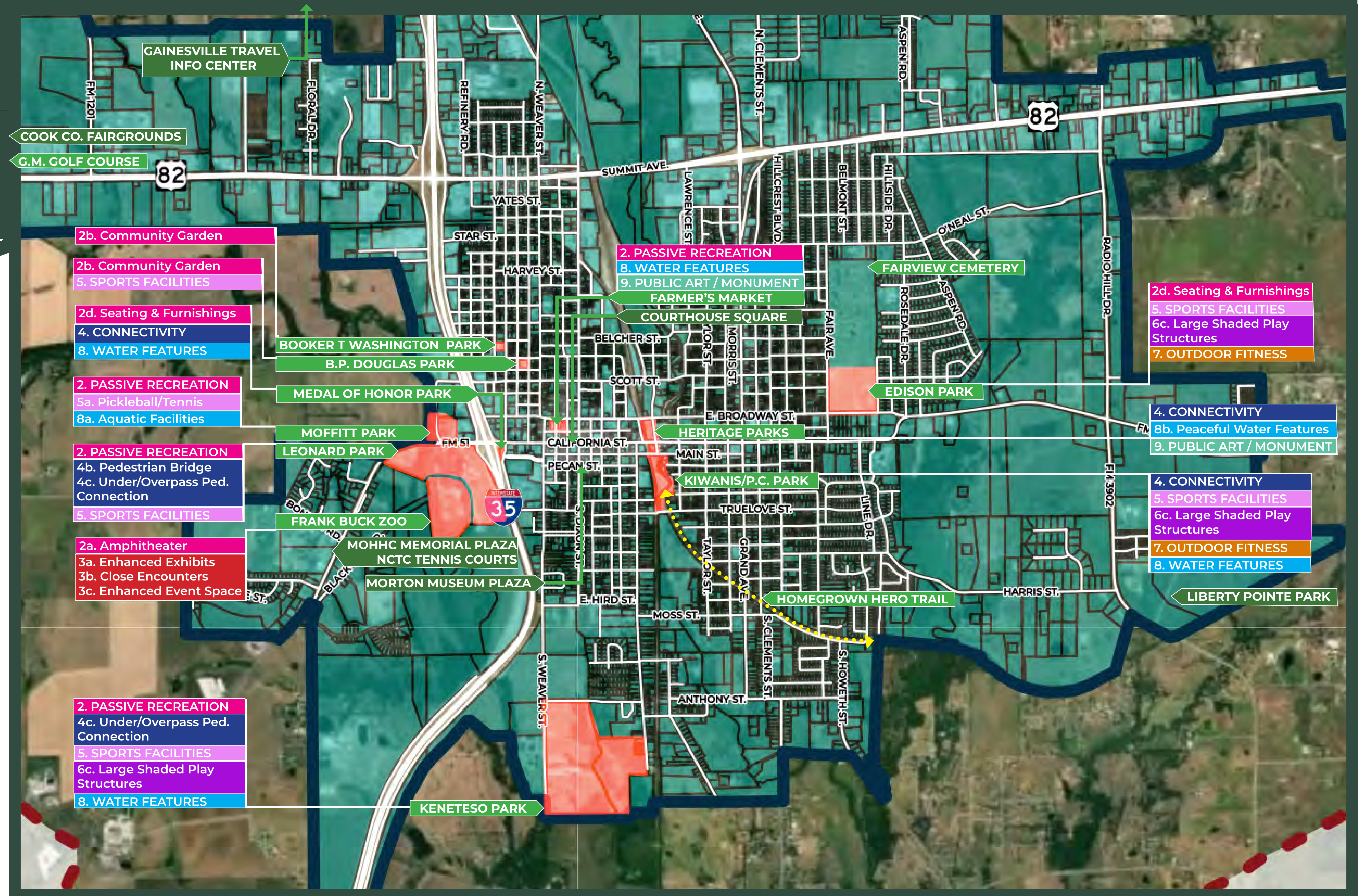




## PUBLIC INPUT SITE-SPECIFIC PRIORITY MATCHING

### Legend

- 1. Trails
- 2. Passive Recreation
- 3. Zoo
- 4. Connectivity
- 5. Sports Facilities
- 6. Playground
- 7. Outdoor Fitness
- 8. Water Features
- 9. Public Art



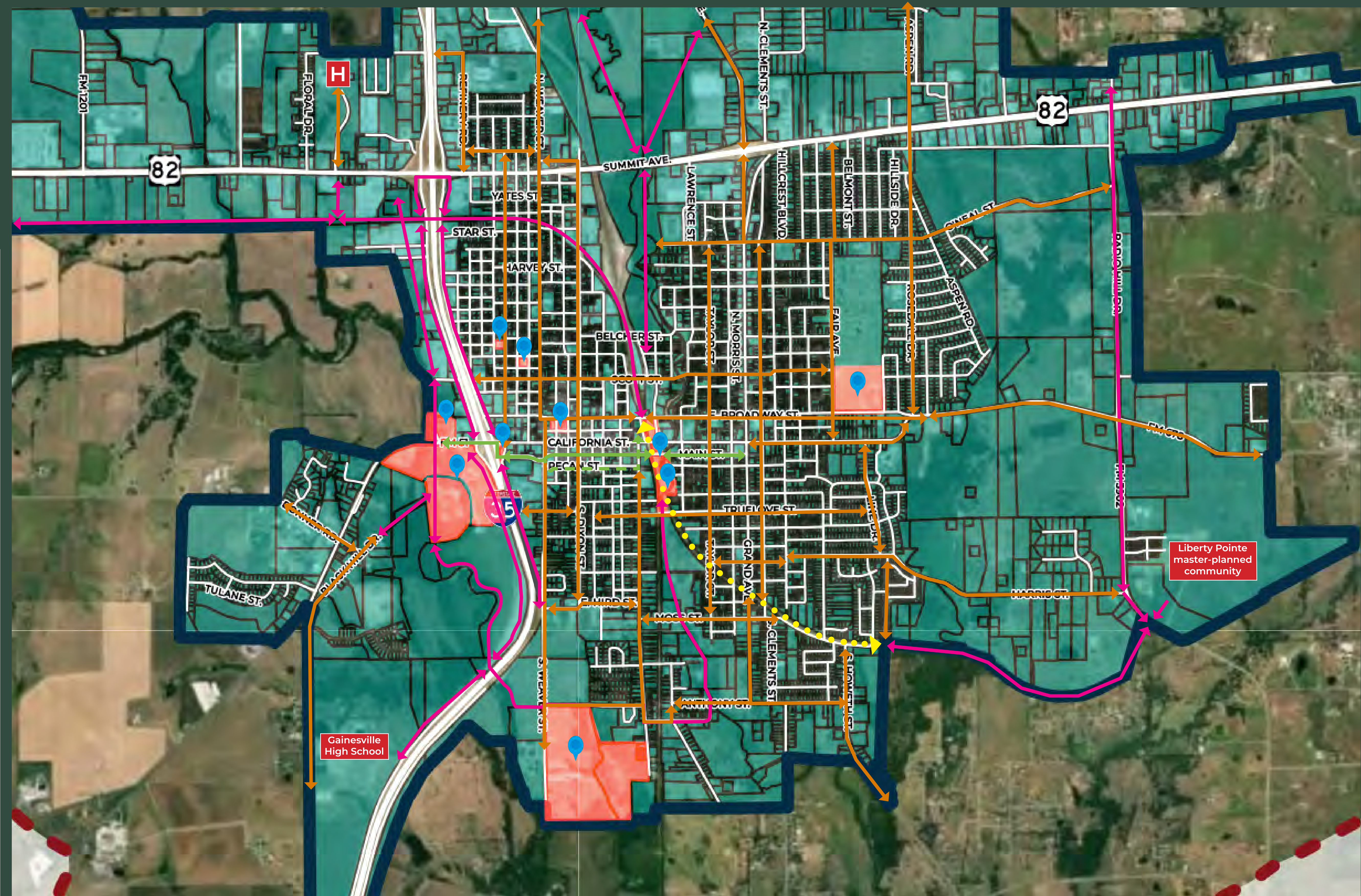
# EXISTING CITY PARKS, TRAILS, & OPEN SPACES





**Legend**

- HIKE & BIKE TRAIL
- ON-STREET TRAIL
- EXISTING TRAIL
- DOWNTOWN GREEN CORRIDOR
- EXISTING PARK SITES



# PROPOSED TRAILS





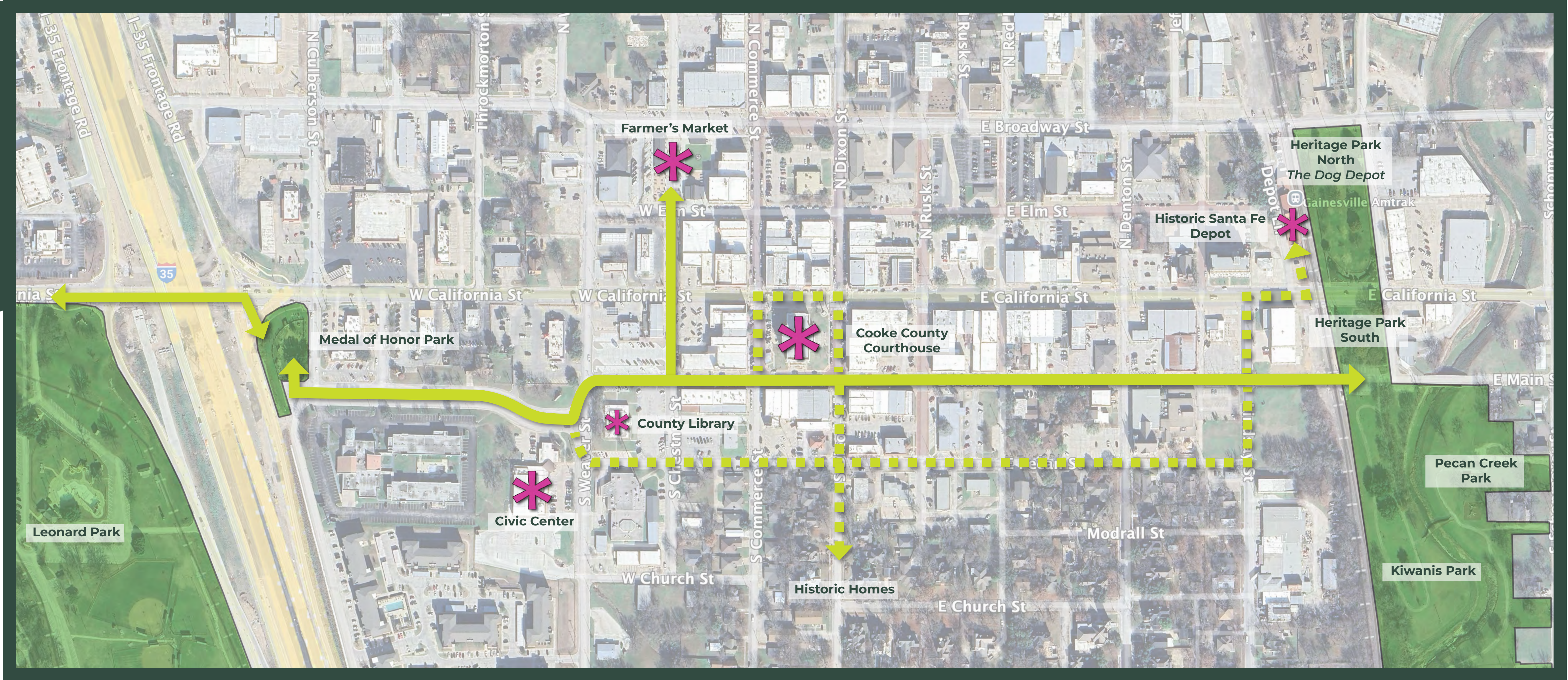
Legend

ENHANCED STREETSCAPE, PRIMARY

ENHANCED STREETSCAPE, SECONDARY

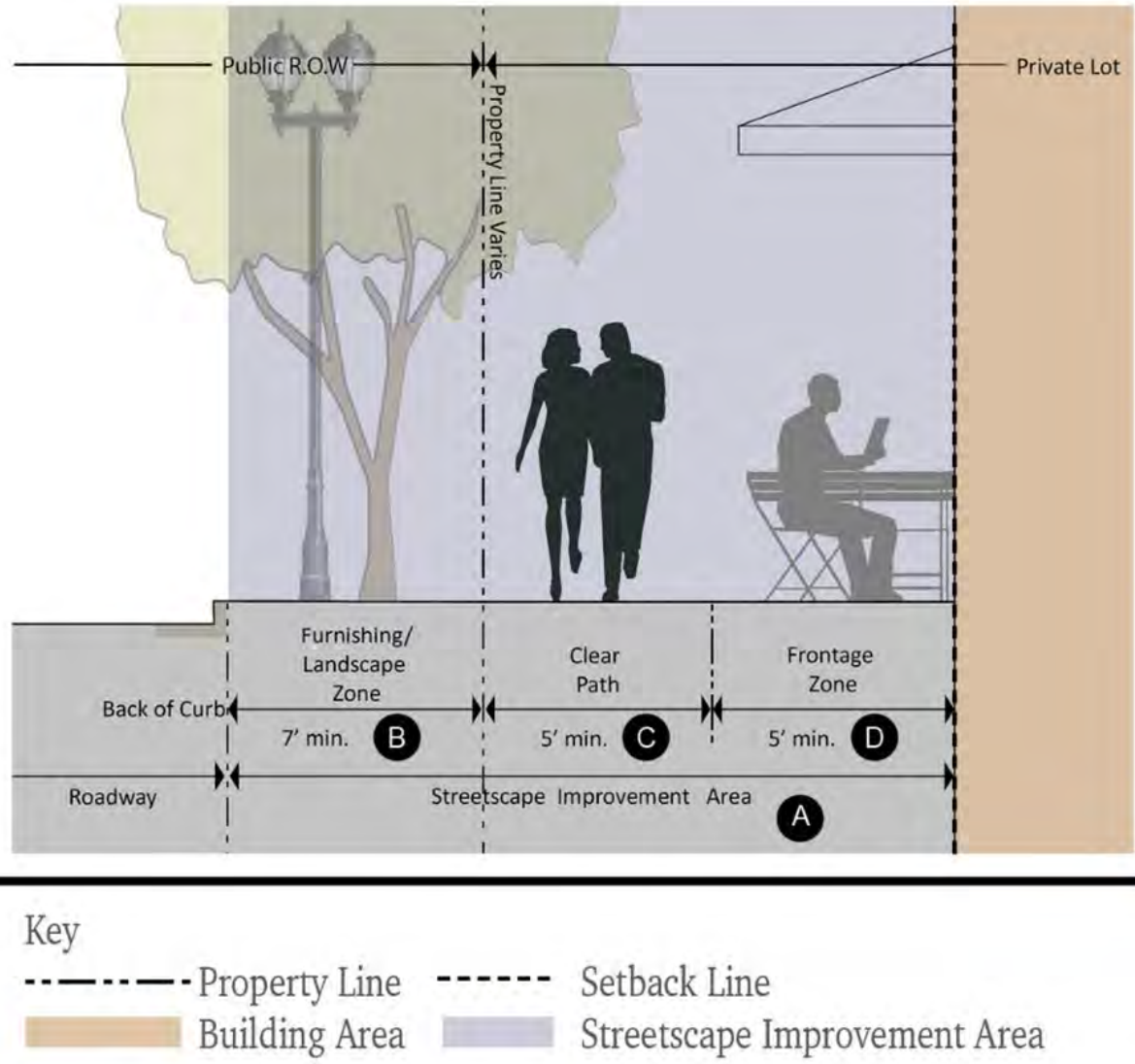
PUBLIC PARK

COMMUNITY / CULTURAL LANDMARK



# DOWNTOWN GREEN CORRIDOR

Downtown Gainesville is blessed with a number of parks in close proximity to the central business core- it is anchored on the west by Leonard Park (including the Frank Buck Zoo and the swimming pool) and the Medal of Honor Park. A cluster of open spaces, including Heritage and Pecan Creek Parks anchor the eastern edge. A green corridor is envisioned connecting the two ends with enhanced streetscape design and thoughtful plantings, paving, lighting and site furnishings. This would serve as a pedestrian-friendly link between these important recreation opportunities- a pedestrian promenade. Additionally, this corridor would provide direct access to other important community functions and cultural landmarks such as the Community Center and the historic courthouse square. There are many other opportunities to branch off to other important locations and the many businesses, services and historic homes in the downtown area.





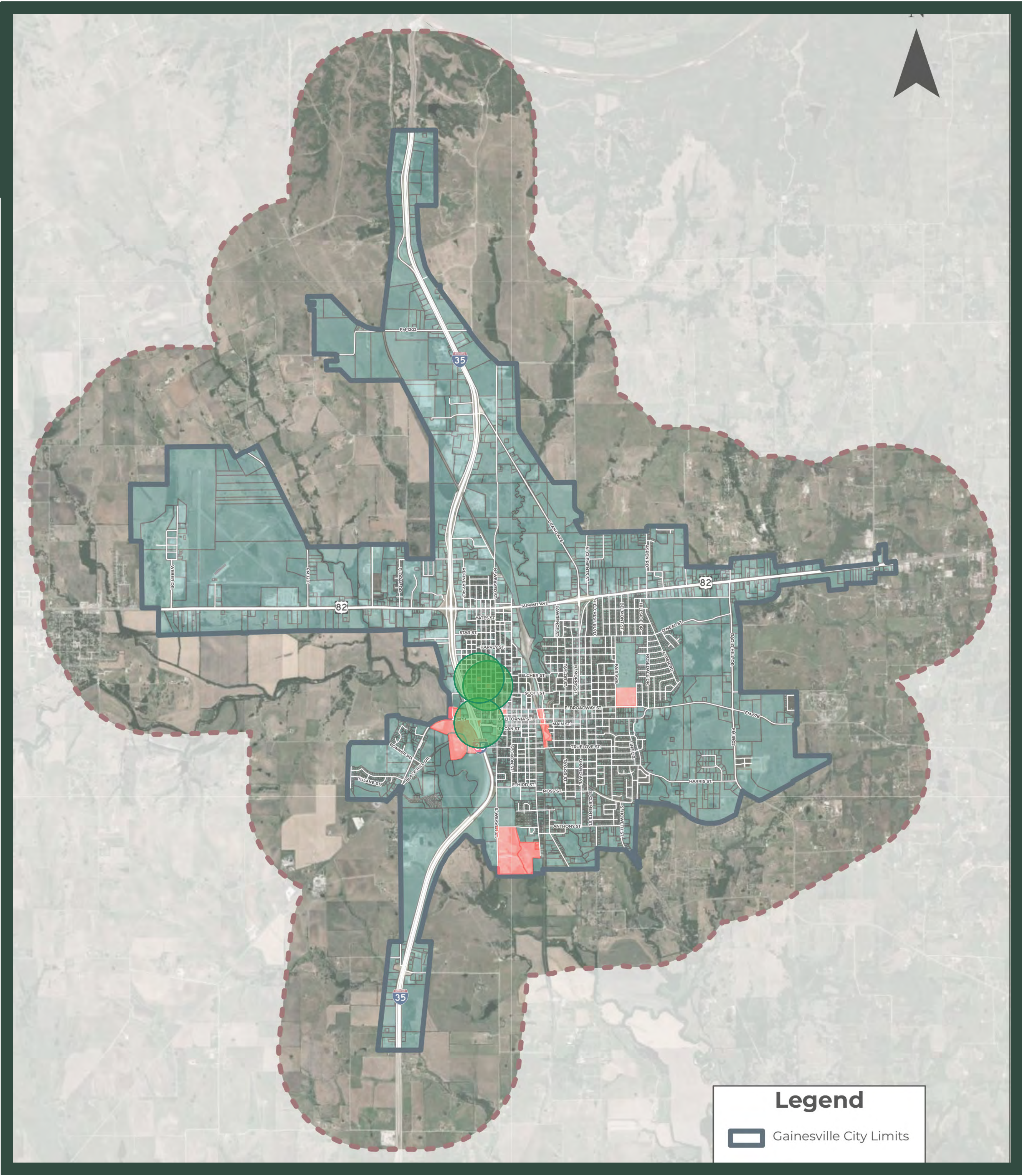
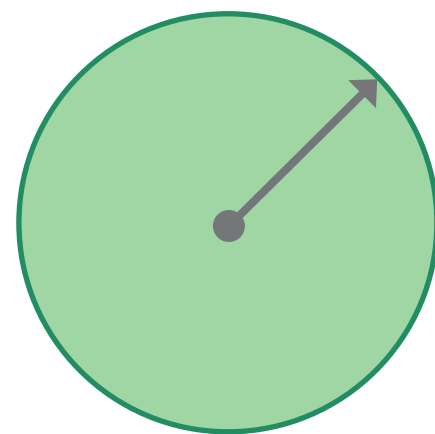


# PARKS EQUITY MAPPING

## Pocket Parks

- B.P Douglas
- Medal of Honor
- Booker T. Washington

Service Radius = 1/4 mile





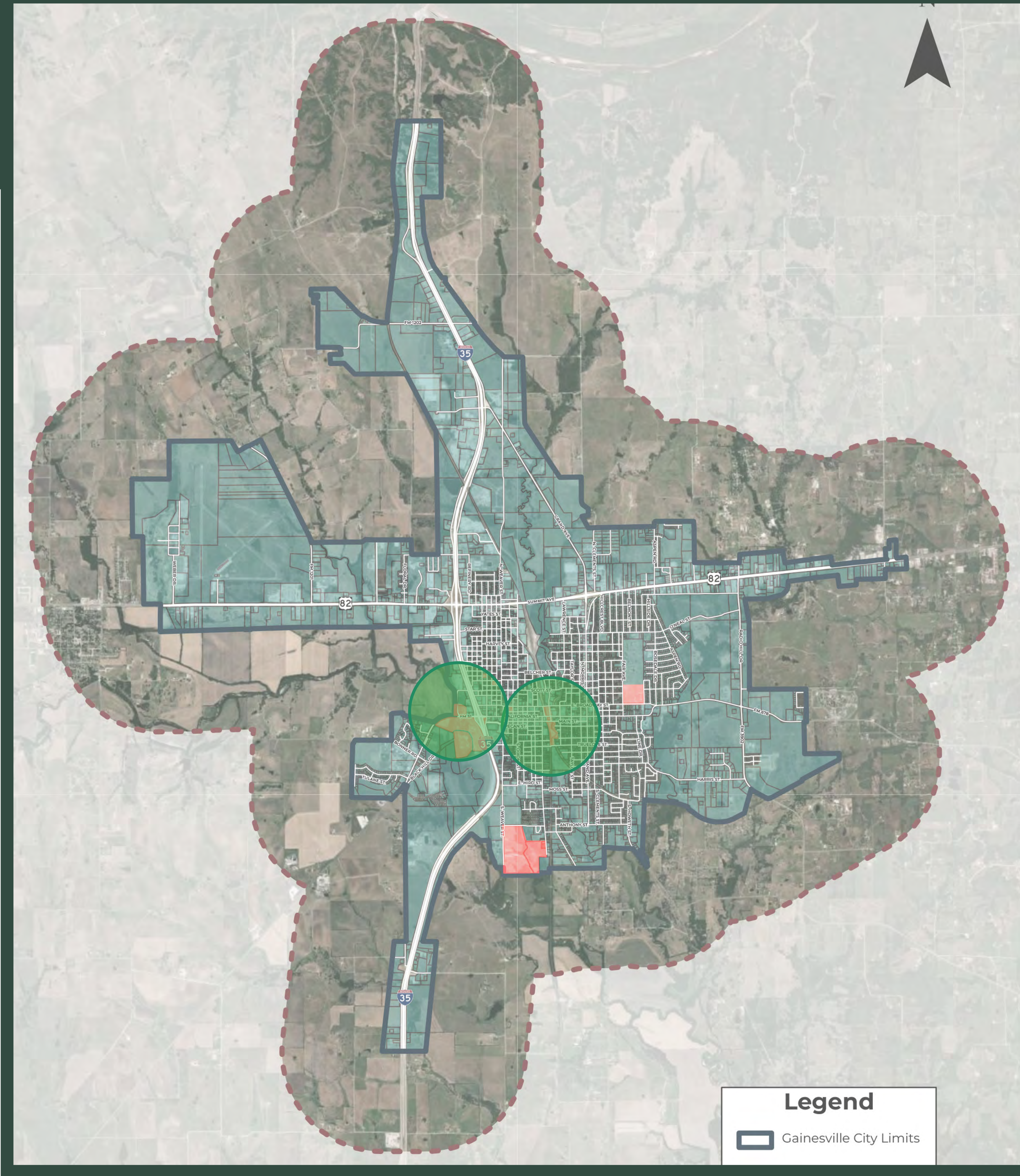
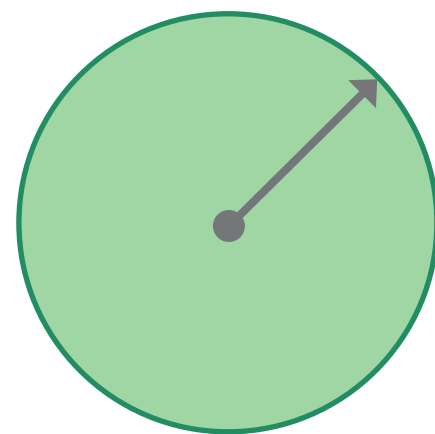


# PARKS EQUITY MAPPING

## Neighborhood Parks

Moffit  
Heritage / Pecan Creek

Service Radius = 1/2 mile



Legend

Gainesville City Limits

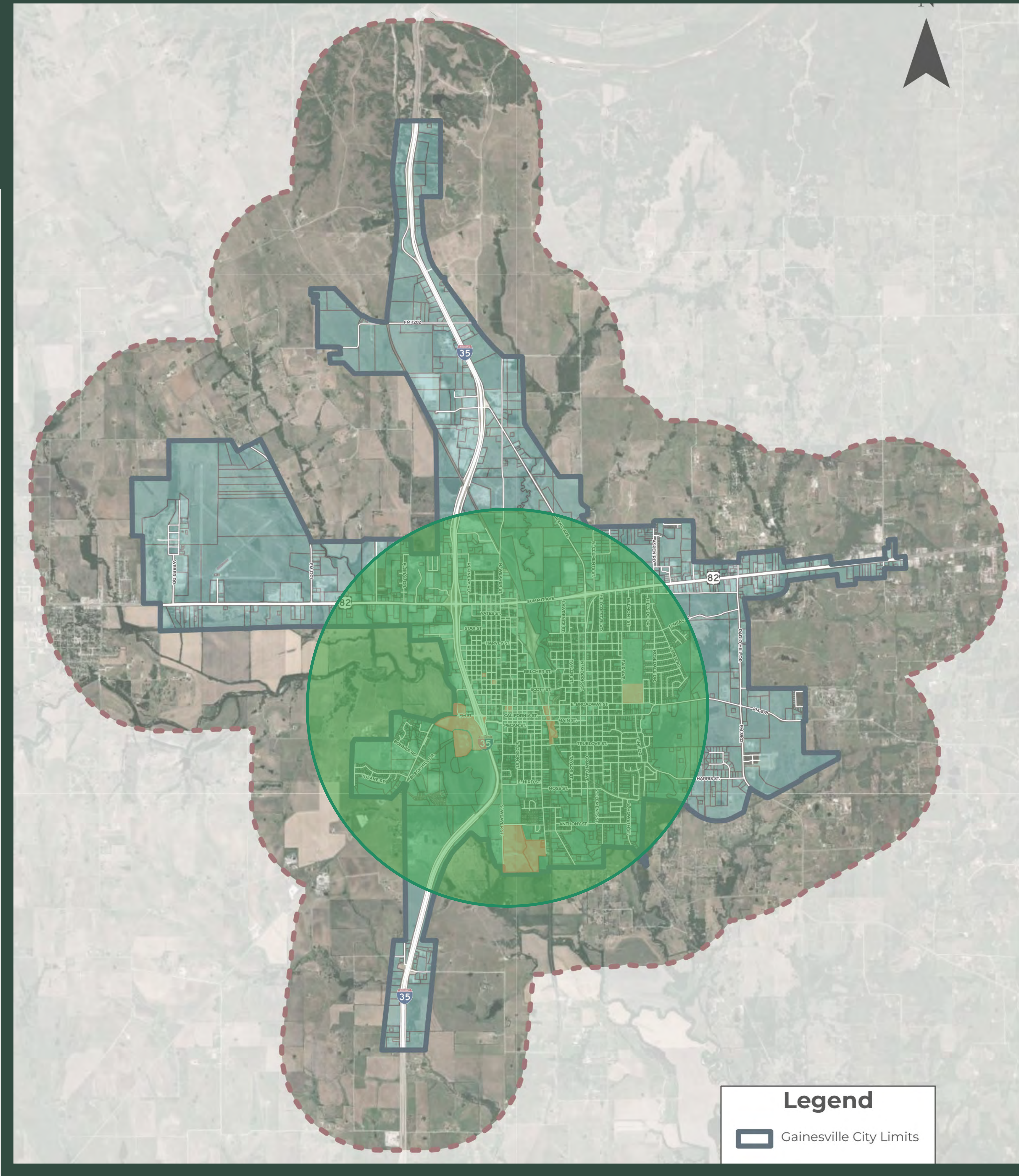
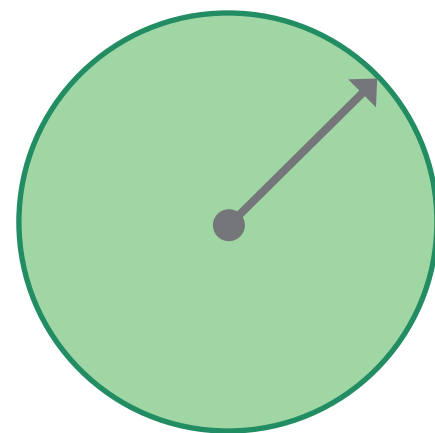




# PARKS EQUITY MAPPING

**Public Plaza**  
Farmers' Market

Service Radius = 2 miles





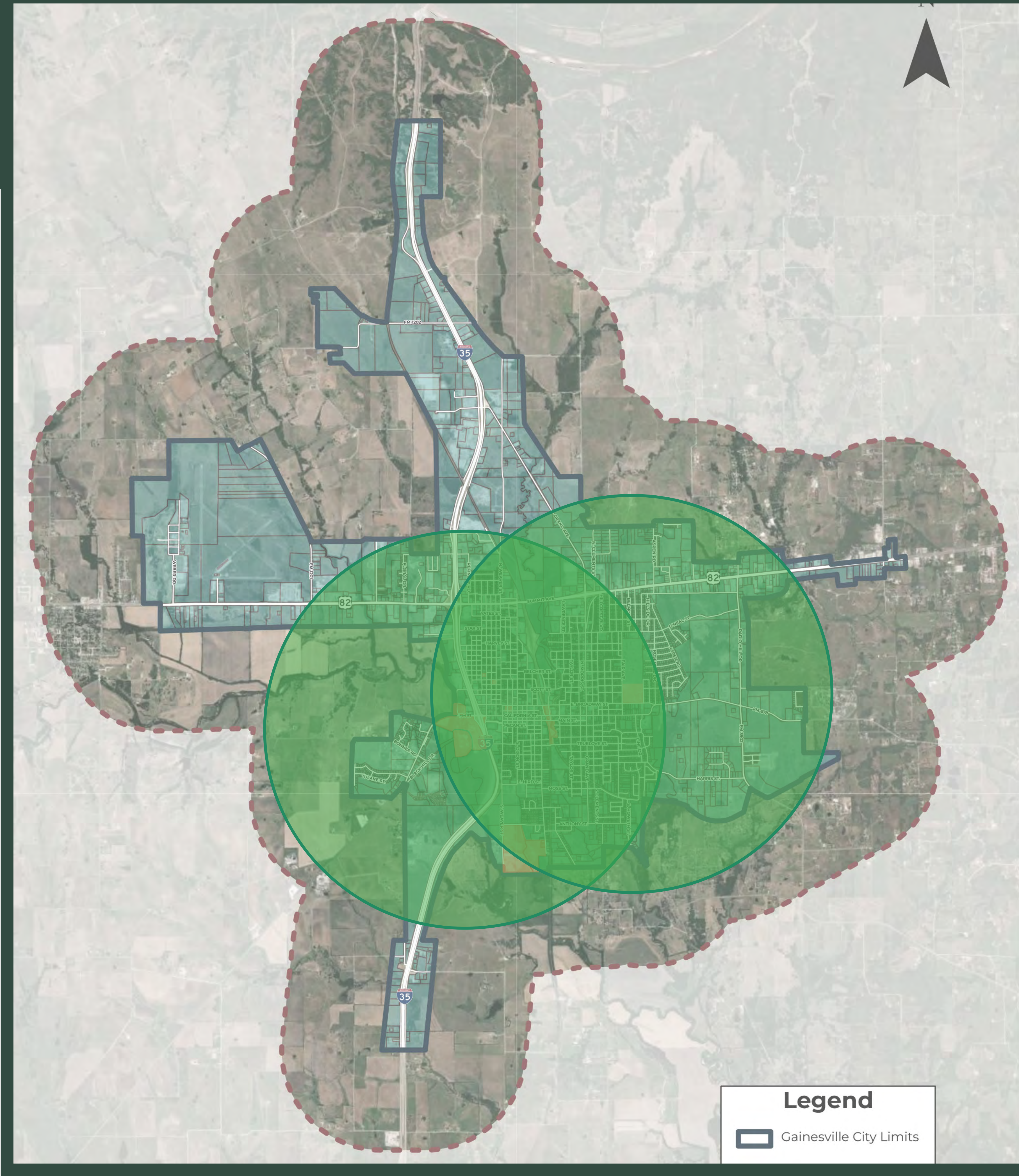
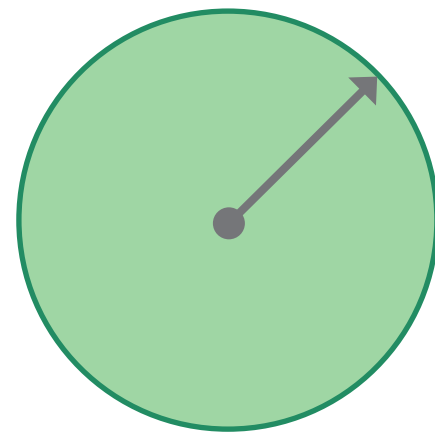


# PARKS EQUITY MAPPING

## Community Parks

Leonard Park  
Eddison Park

Service Radius = 2 miles





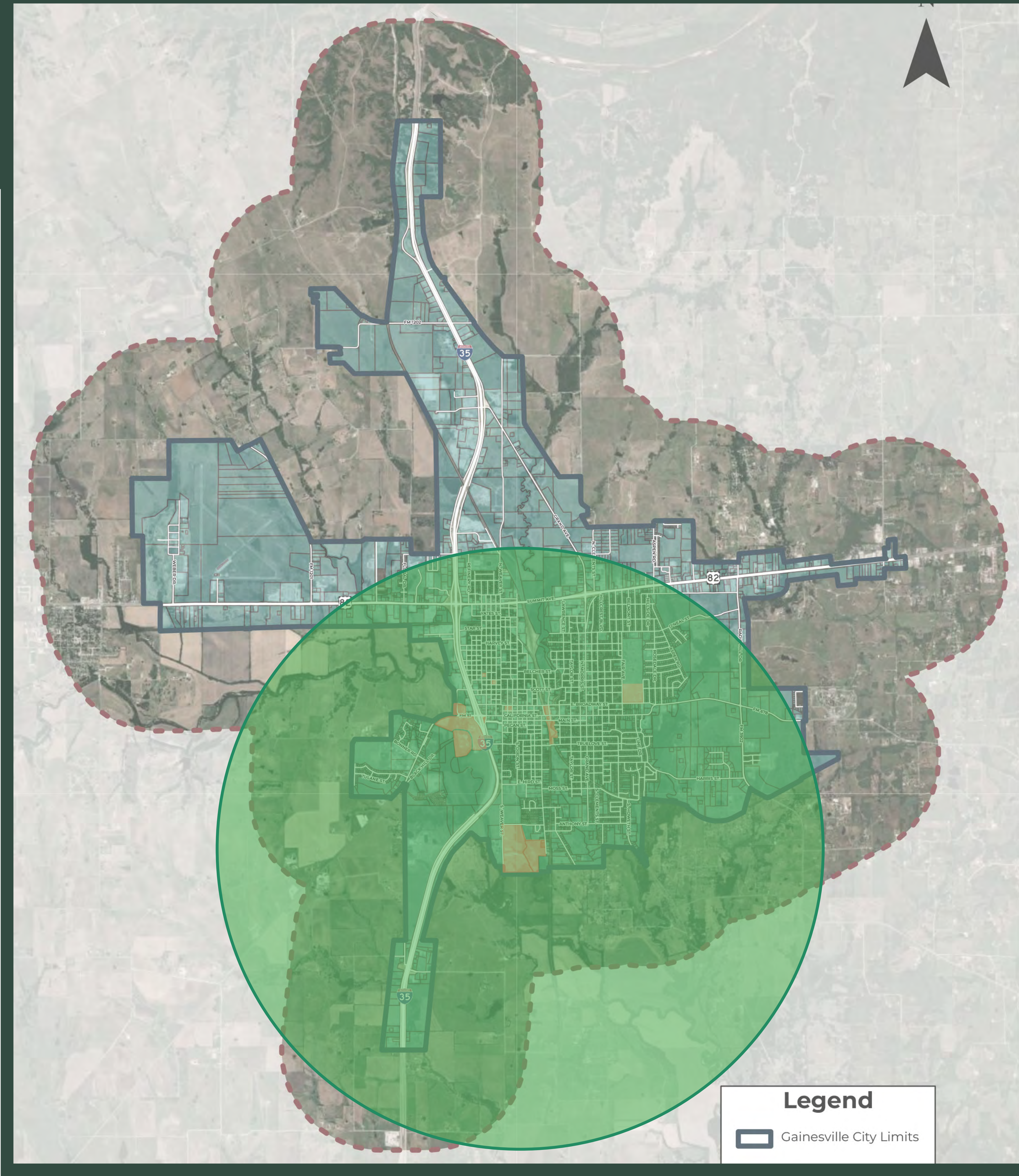
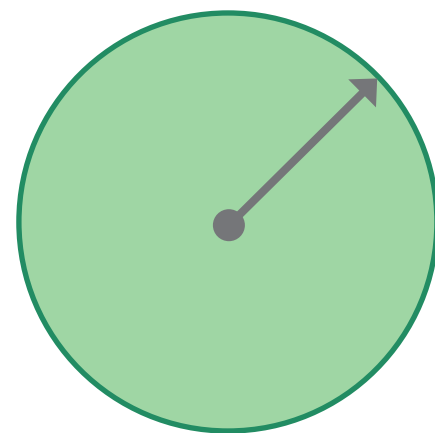


PARKS EQUITY MAPPING

Regional Park

Kenneteso Park

Service Radius = 3 miles



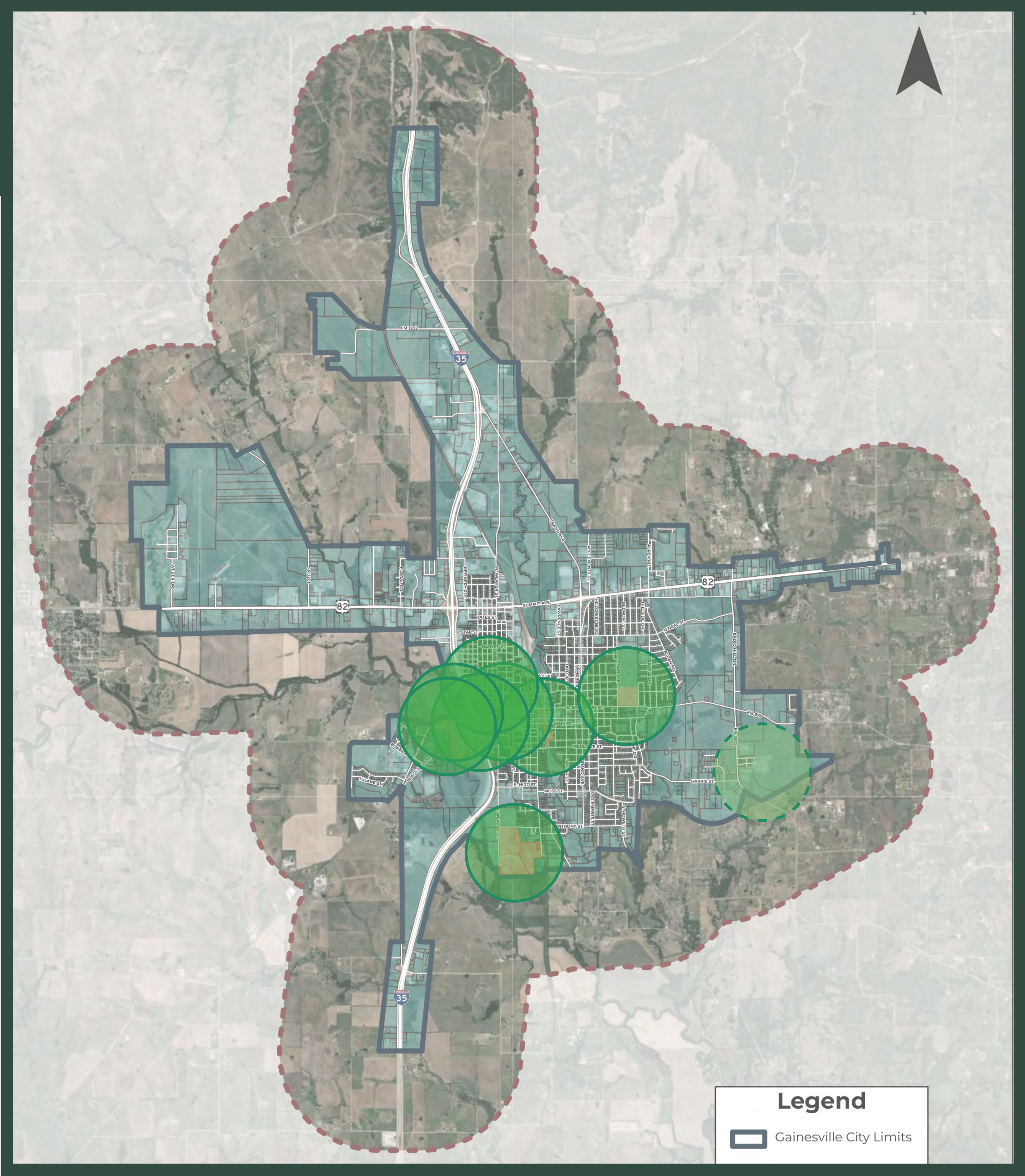
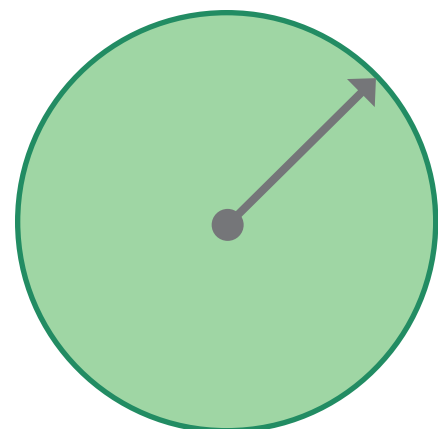




# PARKS EQUITY MAPPING

10-minute walk to a park/playground

Service Radius = 1/2 mile



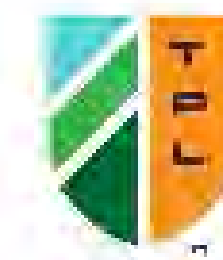




# PARKS EQUITY MAPPING

## Underserved Areas

10-minute walk



ParkServe®

August 25, 2025

Page 1 of 2



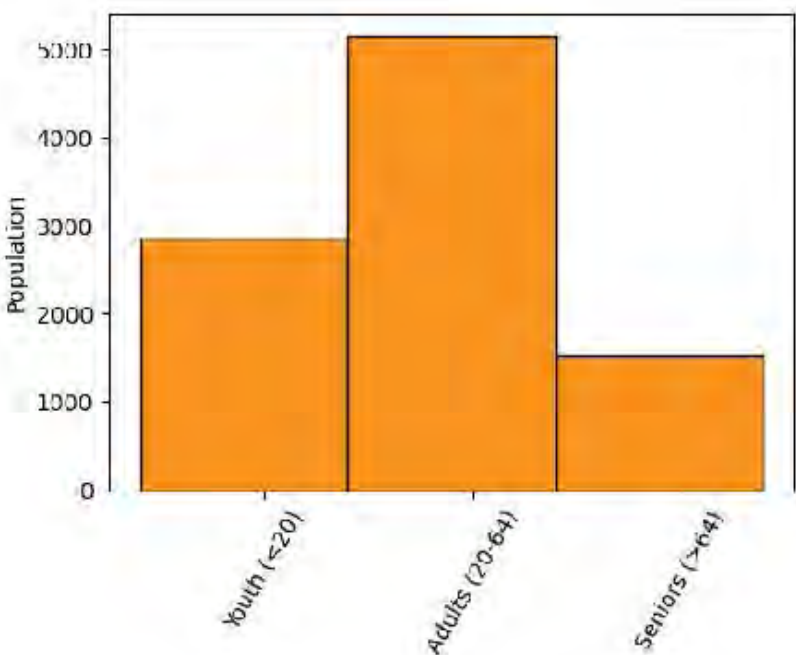
### Project Areas

Gainesville, TX - City Level Report

All statistical results are aggregated for the listed project areas and their service areas. Service areas are based on 10-minute (1/2 mile) walk times from project access points defined for each project area and based upon the walkable network.

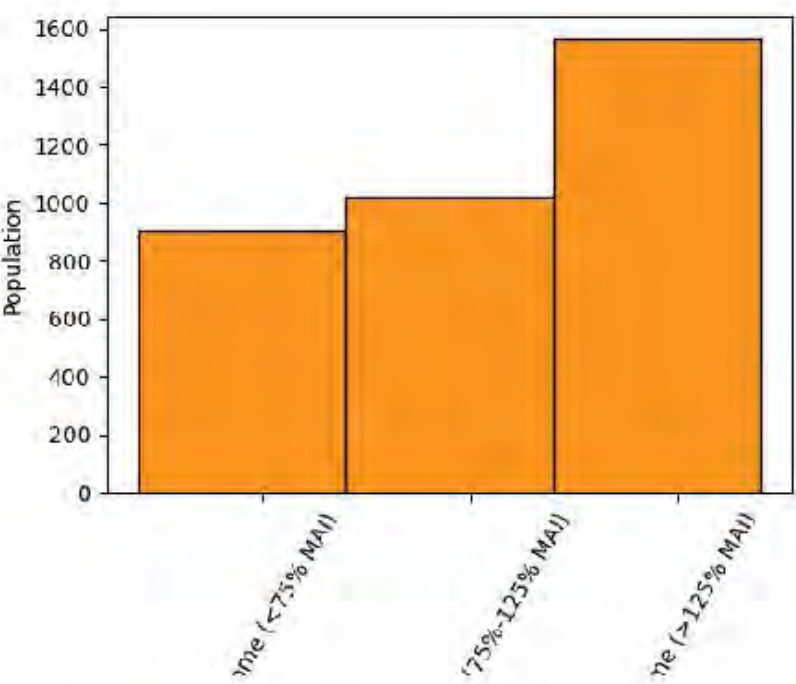
City Statistics	Current
City: Gainesville, TX	
Park Acres	164
Total Population	17,570
Served Population	9,549
Percent Served	54.3%

Age	Within a 10-minute walk
Children (less than age 20)	2,858
Adults (age 20 to age 64)	5,156
Seniors (age 65 and up)	1,536



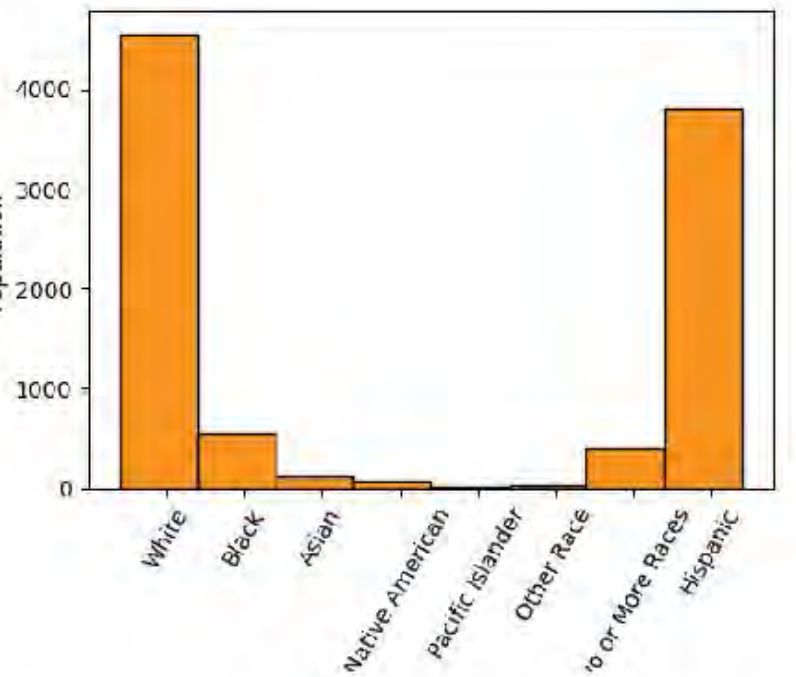
Households by Income	Within a 10-minute walk
Low income	905
Middle income	1,022
High income	1,566

(Generated from urban area median income)



Race/Ethnicity	Within a 10-minute walk
White*	4,557
Black*	552
Asian*	122
Native American*	73
Pacific Islander*	4
Other Race*	29
Two or More Races*	405
Hispanic	3,805

\* Excludes those that report Hispanic origin (which is captured separately from race by the U.S. Census)



Demographic information is derived from ESRI 2024 Demographic Forecast Block Groups data.

This report was created on August 25, 2025 using the ParkServe® interactive mapping site. It is for informational purposes only. The providers of this report disclaim any and all warranties, express or implied, including fitness for a particular purpose or merchantability, and make no representation that the report is complete, accurate, or error free. Use and reliance on this report is at the sole risk of the party using same.  
© 2025 Trust for Public Land.