



PARKS & TRAILS MASTER PLAN: GOALS & OBJECTIVES

GOALS

Ensure All Parks are Safe, Well-Maintained, and High-Quality

Provide Equitable Access to Parks and Green Space for All City Neighborhoods.

Enhance and Expand the Comfort and Usability of Public Outdoor Spaces

OBJECTIVES

Provide continuous maintenance and replace aging equipment for all existing parks and recreation facilities.

Enhance the safety, accessibility, and function of regional park assets through strategic capital projects.

Identify underserved or growing neighborhoods and prioritize the acquisition of properties for parks and recreational programming.

Capitalize on existing shade by managing urban forest vitality in public spaces, and by relocating and reconfiguring movable amenities to maximize user comfort benefits.

Increase shade canopy with new trees and shade structures in public spaces.

Increase drinking water access in public spaces.

Reduce travel distances to accessible public restrooms for parks, trails, and public space users.

Increase sense of security in outdoor public spaces through inclusive urban design.

No.

IMPLEMENTATION STRATEGIES

- 1.1

Implement the site-specific maintenance recommendations for all existing parks including equipment replacements, amenity repairs, and safety improvements as prioritized in the Guiding Gainesville Parks and Trails Master Plan.
- 1.2

In partnership with the GEDC, maintain the former M-K-T Railway property as a managed open space as detailed in the Guiding Gainesville Parks and Trails Master Plan.
- 2.1

Address parking infrastructure and pedestrian safety needs at the Frank Buck Zoo by evaluating the the zoo’s primary entrance location, traffic circulation, and parking design.
- 2.2

Evaluate the practicality of relocating some or all sports fields from Leonard Park and Edison Park by establishing a regional sports complex with expanded offerings at Keneteso Park.
- 3.1

Evaluate prospective new park locations based on equity mapping analysis and public input as prescribed in the Guiding Gainesville Parks and Trails Master Plan.
- 3.2

Prioritize funding for aquisition and development of land parcels designated for new parks in underserved areas of the city.
- 3.3

As prioritized in the Guiding Gainesville Parks and Trails Master Plan, develop location-specific design programs for new Mini, Neighborhood, and Community parks. Maximize new park value by offering novel recreation equipment and experiences.
- 4.1

Rearrange unshaded tables, benches, grills, and playground equipment as prioritized in the Guiding Gainesville Parks and Trails Master Plan.
- 4.2

Incorporate all tree maintenance best practices into a comprehensive tree maintenance plan, using tree-mapping software to track all trees on city properties.
- 4.3

Implement a Schedule of Fines for negligent damage and destruction of downtown shade trees and citywide street trees.
- 5.1

Use tree-mapping software to prioritize the multi-year tree-planting plan.
- 5.2

Implement an ongoing Street Tree Rebate Program.
- 5.3

Host Texas Arbor Day tree-planting events in addition to Medal of Honor tree-planting events.
- 5.4

Require at least one shade pavilion at all new Community Parks.
- 6.1

Provide at least one shaded combination accessible drinking fountain/filling station/watering station at all existing and new facilities.
- 7.1

Construct a permanent accessible public restroom (convenient to accessible parking and playgrounds) to serve both Edison Park and Fairview Cemetery, Pecan Creek Park, the Dog Depot, Moffett Park, and Medal of Honor Host City Park.
- 7.2

Require at least one permanant accessible public restroom (convenient to accessible parking and playgrounds) at all new Community Parks, Plazas, Trailheads, and Water-Play Facilities.
- 8.1

Maintain a standard of multi-layered lighting, clear sightlines, effective wayfinding, and CCTV camera infrastructure across downtown streets, pedestrian pathways, and mixed-use public spaces.



PARKS & TRAILS MASTER PLAN: GOALS & OBJECTIVES

Optimize Underutilized Open Space and Strengthen Accessibility For All Users

Implement targeted incremental improvements at underdeveloped park facilities to increase value, diversify recreation opportunities, and enhance inclusivity, accessibility, and long-term functionality for all .

- 9.1 Under the guidance of a city accessibility advisory board, retrofit all existing park facilities to be fully ADA-accessible.
- 9.2 Implement the site-specific amenity improvement recommendations for all existing parks as prioritized in the Guiding Gainesville Parks and Trails Master Plan.
- 9.3 To activate underused park facilities and engage underrepresented users, develop and fund diversified programming targeted to serve a full range of user age groups, as detailed in the Guiding Gainesville Parks and Trails Master Plan.
- 9.4 Pursue infill pocket park development opportunities in the downtown area as suggested in the Guiding Gainesville Parks and Trails Master Plan.

Create a Connected City-wide Network of Trails and Greenways

Through the adoption of a Complete Streets & Trails Policy, unify the user experience across the active transportation network to facilitate every-day practical use.

- 10.1 Adopt a Complete Streets & Trails Policy, including a City Trail Facilities Design Standards conforming to AASHTO's Guide for the Development of Bicycle Facilities.
- 10.2 Provide safer routes city-wide for citizens on foot or on bike with the creation of a City Active Transportation Plan.
- 10.3 In conformance with a Complete Streets & Trails Policy, adopt a city ordinance for use of eBikes and eScooters in public spaces that safely supports users of active transportation.
- 10.4 Enhance existing trails and sidewalks to meet adopted design standards.
- 10.5 Require child/cargo-friendly bike racks and parking corrals at all public space facilities

Identify, acquire, and develop properties for the construction of greenways in floodways and abandoned railroad rights-of-way.

- 11.1 Starting with property already owned by the city, develop the Pecan Creek Greenway and the Elm Fork Greenway, and link existing parks as detailed in the Guiding Gainesville Parks & Trails Master Plan.
- 11.2 Identify for acquisition the prospective alignments and preferred land parcels for a greenway along Wheeler Creek.
- 11.3 Establish use agreements or acquire all land parcels necessary for a greenway along the former M-K-T railway.

Link, enhance, and unify Parks and Open Space across downtown corridors.

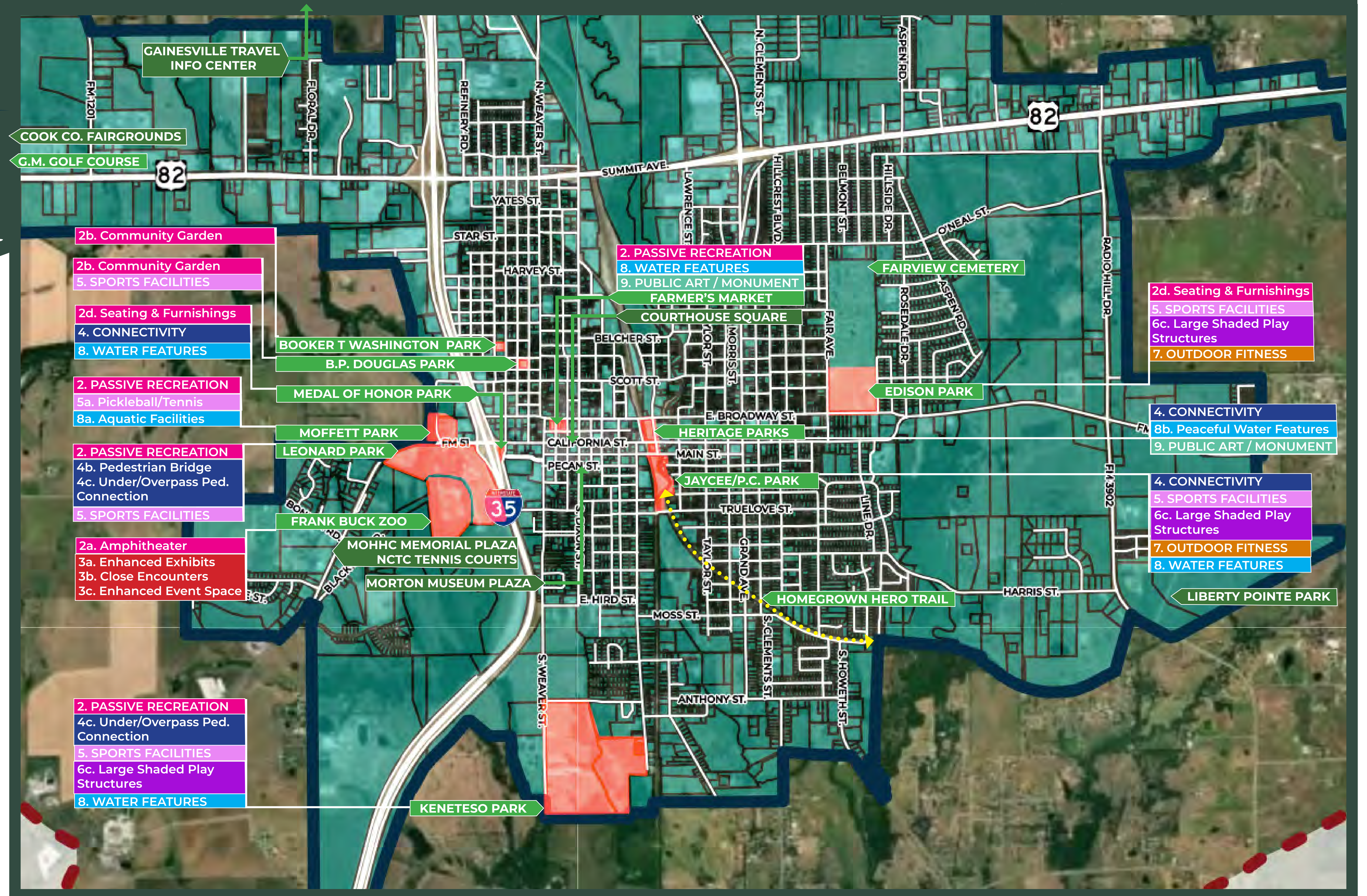
- 12.1 In conformance with a Complete Streets & Trails Policy, reconfigure downtown streetscapes into pedestrian-centric and cycling-friendly corridors extending west-east in order to equally support active transportation user travel between the Elm Fork and Pecan Creek Greenbelts
- 12.1 Improve pedestrian facilities between Main St. and the Farmers Market along Chestnut St., including widened sidewalks and textured, enhanced crosswalk paving at intersections.
- 12.1 Convert Red River St. from Pecan St. to California St., and Denison St. from Main St to Broadway, into Woonerf ("Living Street" or "Festival Street") designs, reducing speed limits, eliminating curbs, and increasing landscaping, while adding raised crosswalks at intersections.



PUBLIC INPUT SITE-SPECIFIC PRIORITY MATCHING

Legend

- CITY FACILITIES
- FACILITIES BY OTHERS
- EXISTING TRAIL
- 1. Trails
- 2. Passive Recreation
- 3. Zoo
- 4. Connectivity
- 5. Sports Facilities
- 6. Playground
- 7. Outdoor Fitness
- 8. Water Features
- 9. Public Art

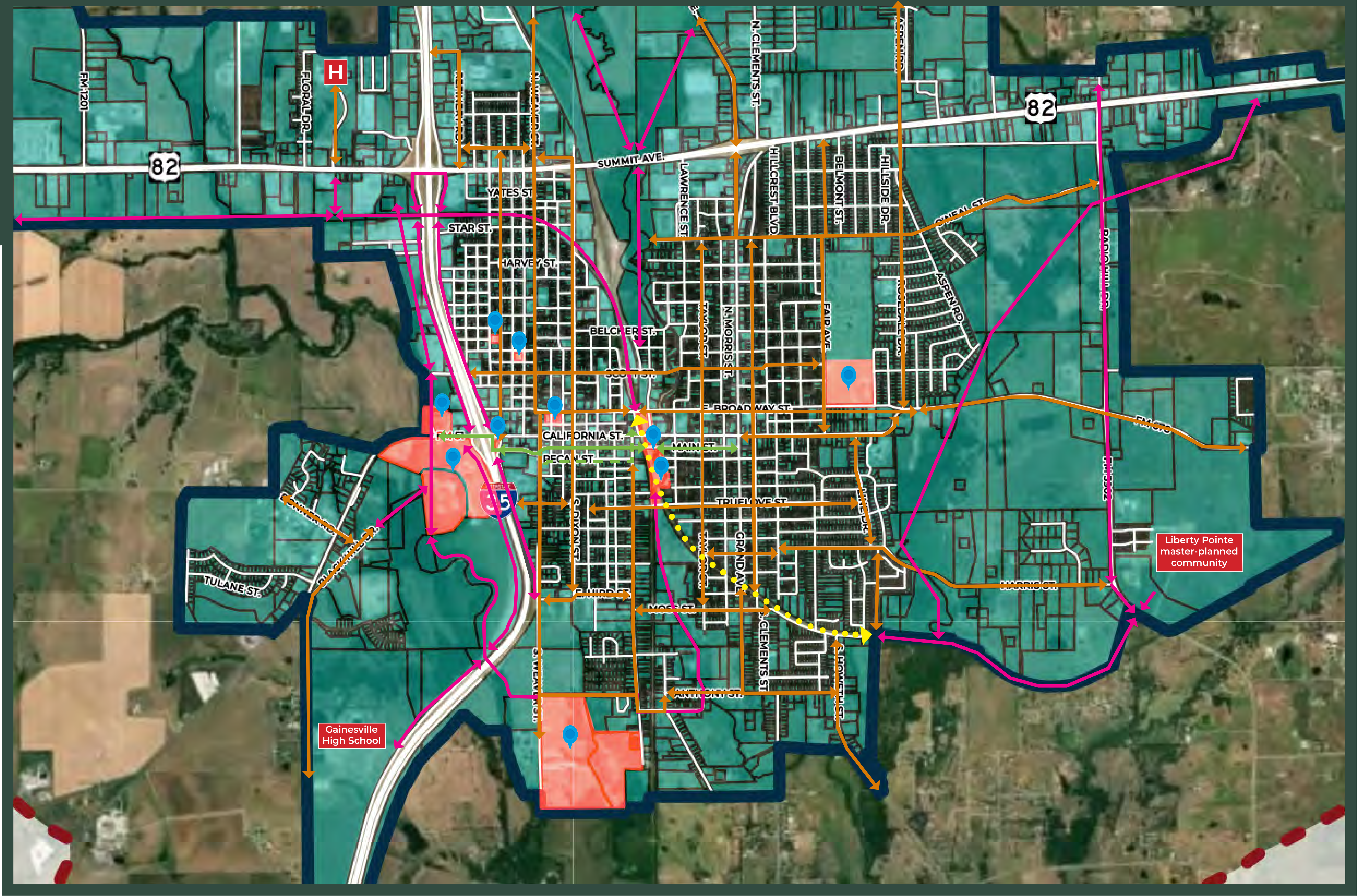


PARKS, TRAILS, & OPEN SPACES MAP



Legend

- HIKE & BIKE TRAIL
- ON-STREET TRAIL
- EXISTING TRAIL
- DOWNTOWN GREEN CORRIDOR
- EXISTING PARK SITES



PROPOSED TRAILS NETWORK MAP



EXISTING PARK / RECREATION FACILITY INVENTORIES

LEONARD PARK



Current Conditions

Amenities

- 6 Park benches, multiple styles, good condition
- Picnic tables, mixed styles/materials/condition
- 9 grills, trash barrels in fair condition
- 3 drinking fountains, varying style, in good condition
- 2 pavilions, restrooms in good condition

Play Equipment

- Pee Wee Tot Lot equipment/fence/gate in fair, but aged condition; needs repairs
- Community Park Playground in fair condition; showing it's age and nearing end of lifespan

Sports Equipment

- 8 ballfields, 2 with clay infields; poor surface conditions
- Backstops, covered dugouts in good condition
- Aluminum bleachers in good condition

Vegetation

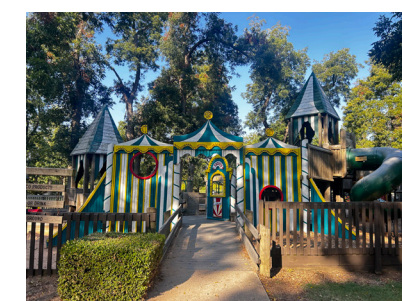
- Dozens of mature shade trees generally in good condition
- Planting bed landscaping beds in poor condition, needs refresh

Lighting

- Good overhead lighting in pavilions
- Aluminum mast pole ballfield lighting in good condition
- Park interior illumination is a mix of street pole lighting and pedestrian scaled streetlamps, good condition

Heritage/Access

- Multiple monuments, all in good condition
- ADA/Access issues prevalent across facility
- Autocentric design limits non-driver access



MOFFET PARK



Current Conditions

Amenities

- 3 picnic tables in poor condition
- 2 trash barrels in fair condition
- 1 grill in fair condition

Play/Sports Equipment

- 6-seat swingset in fair condition
- 3-hole disc golf baskets in good condition

Vegetation

- Canopy of large shade trees in good condition
- Absence of ornamental landscaping
- Turfgrass in fair condition

Lighting

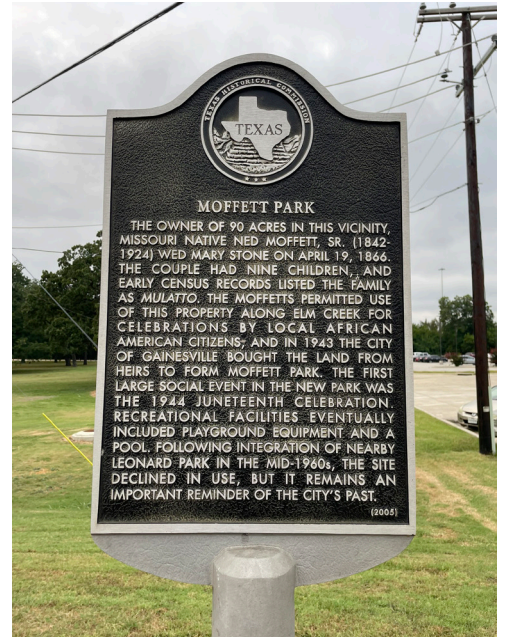
- 1 powerline streetlight at SE corner of the park
- 1 pole streetlight at swingset

Heritage

- 1 monument in good condition
- 2 memorial plaques in good condition
- 1 interpretive sign in good condition

Access

- Wooden bollard-lined single gravel driveway with shoulder parking and turnaround terminus
- Foot traffic limited to adjacent businesses but not accessible
- No water access to Elm Fork



BOOKER T. WASHINGTON PARK



Current Conditions

Amenities

- 1 trash receptacle in good condition
- 1 park sign in fair condition

Sports Equipment

- Metalframe chainlink ballpark backstop in good condition

Fencing

- Medium-height chainlink in fair condition

Vegetation

- Mature trees in good condition
- Turfgrass in good condition

Lighting

- 1 pole light each on Mill and Culberson Streets

Heritage

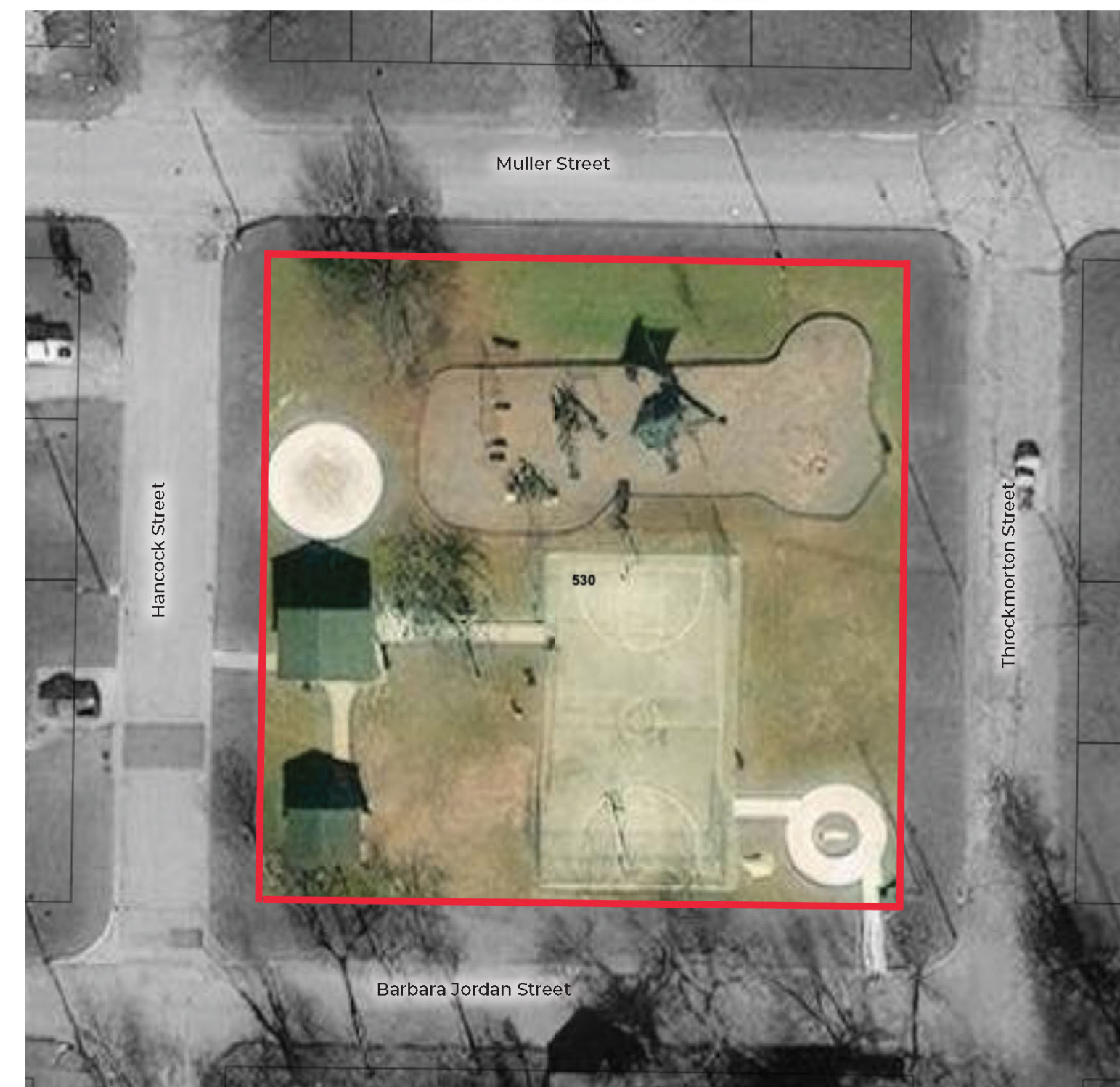
- No clear indications of historic land use

Access

- Fence openings on the NE, SE, and SW corners
- Small curb cut at SW corner
- No sidewalks



B.P. DOUGLAS PARK



Current Conditions

Amenities

- 1 pavilion in fair condition
- 7 picnic tables in varying condition
- 1 grill, 6 trash barrels in good condition
- 1 drinking fountain in working condition
- 2 park benches in good condition
- Men's & Women's restrooms in good condition

Play/Sports Equipment

- 2 play structures and 1 music playset in fair condition
- 2 climbers and 2 swingsets in fair condition
- 1 splashpad in good condition
- 1 basketball court with chainlink backstops in weathered but fair condition
- Unremoved tree stump in play area

Vegetation

- 4 shade trees in good condition
- Turfgrass in fair condition

Lighting

- 1 aluminum pole field light for basketball court
- 1 pole street lamp midblock on Muller St.

Heritage

- Monument with enhanced paving in good condition
- Pedestal memorial plaque in good condition

Access

- No street sidewalks or crosswalks
- Only 2 curb cuts, neither at corners
- Plastic playground barrier is challenging for access





EXISTING PARK / RECREATION FACILITY INVENTORIES

HERITAGE PARK NORTH (DOG DEPOT)



Current Conditions

Amenities

- 12 moveable park benches in good condition
- Waste stations, trash receptacles, faux fire hydrants in good condition
- Drinking fountain in poor condition
- Small shade structure in fair condition
- Electrical outlets untested

Fencing

- Entry gates in good condition
- Wrought metal fencing in good condition
- Small dog area is conspicuously smaller

Vegetation

- Mature shade and ornamental trees in good condition
- Turfgrass in good condition

Lighting

- 1 solar-powered LED pole light at drinking fountain; operation status untested
- 3 powerline streetlights on Denison St. (1 on corner of Broadway)
- 1 powerline streetlight on California St.
- No lighting at Dog Park entry plaza
- Pedestrian scale street lampposts at Santa Fe Depot

Access

- North/South sidewalks good size/condition
- South sidewalk includes ADA ramps
- East sidewalk non-existent
- Railroad crossings in poor condition
- Broadway St. crosswalks non-existent
- California St. crosswalks non-existent



HERITAGE PARK SOUTH



Current Conditions

Amenities

- 3 circular picnic tables on circular concrete pads in good condition
- 1 rectangular (non-accessible) picnic table on a circular concrete pad in good condition
- Signs and trash receptacle in good condition

Vegetation

- 10 mature shade trees in good condition
- Mature shrubs in mixed condition, some non-viable
- Turfgrass in either fair condition or absent under mature shade trees

Lighting

- Single, pole lamp floodlight in fair condition
- Limited lighting design creates shadowy pocket conditions

Surfacing/Heritage

- Concrete sidewalk in fair condition with some limited surface issues and root disruption
- Bicentennial monument in highly deteriorated condition
- Small plaques in fair condition

Access

- ADA ramps limited to California St.
- California St., Denison St. crosswalks non-existent
- Main St. crosswalk in fair condition
- Railroad crossings in poor condition



JAY-CEE PARK



Current Conditions

Amenities

- 1 park bench in good to fair condition
- 1 picnic table in fair condition
- 1 trash receptacle in good condition

Sports Equipment

- Fitness stations in fair to poor condition
- Interpretive signs in fair to poor condition

Vegetation

- Mature shade trees in good condition
- Turfgrass in good condition
- Algae build-up in creek

Lighting

- 3 pole lights along loop path

Access

- Concrete/asphalt paved path
- Metal posts at path entry in poor condition



PECAN CREEK PARK



Current Conditions

Amenities

- 3 park benches in poor condition
- 4 picnic tables in fair condition
- 2 pavilions in fair condition
- 1 bottle-filling station in good condition
- 1 drinking fountain non-functional, in poor condition
- 3 trash barrels in fair condition

Play Equipment

- All playground equipment in need of replacement due to poor condition

Vegetation

- Multiple shade trees in good condition
- Turfgrass in good condition
- Algae build-up in creek

Sports Equipment

- Skate park fixtures in good condition
- Skate park surfacing in fair condition

Lighting

- 1 pole light at main parking lot
- 1 flood light at skate park

Access

- Playground curbing, lack of paved access path presents challenges to access
- Concrete/asphalt paved path
- Main parking area, gravel-paved, bollard-edged; in poor condition
- Skate park parking area spaces highly limited
- Pedestrian footbridge in fair condition





EXISTING PARK / RECREATION FACILITY INVENTORIES

MEDAL OF HONOR PARK



Current Conditions

Amenities

- 8 flagpoles in good condition
- 6 ornamental planters in good condition
- 11 park benches in good condition
- 2 trash receptacles in good condition
- 1 water feature in good to fair condition

Vegetation

- 4 shade trees in good condition
- Ornamental landscaping in good condition

Lighting

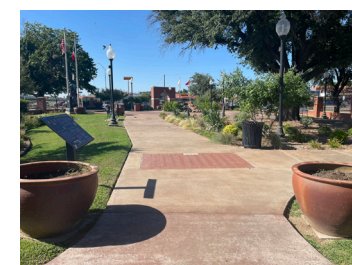
- 3 monument floodlights
- 6 flagpole spotlights
- 8 pedestrian streetlamps

Heritage

- 1 central monument formation in excellent condition
- 1 secondary monument in good condition
- 1 memorial plaque in good condition

Access

- Limited by perimeter brick walls to 2 gated entry arches with security cameras
- Parking spaces paved but limited to just 8
- No sidewalk on Cuberson St.
- ADA ramps at California St.
- No crosswalks at Cuberson and Medal of Honor Blvd.



GEORGIA BASS- GREAT HANGING MEMORIAL PARK



Current Conditions

Amenities

- 2 park benches in good condition

Vegetation

- 7 mature shade trees in good condition
- Turfgrass in good condition

Lighting

- Flush-mounted spotlights on paired monuments

Heritage

- 1 paired stone tablet monument in good condition
- 1 single stone tablet monument in good condition
- 1 bell pedestal monument in good condition

Access

- No paved paths
- No dedicated parking spaces



KENETESO PARK



Current Conditions

Amenities

- 2 lighted combination pavilion/concessions/restrooms buildings in good condition
- Associated picnic tables in good condition
- 3 drinking fountains in good condition, 1 in poor condition
- Multiple trash barrels in good condition
- 1 pedestrian footbridge in poor condition

Play Equipment

- 2 swingsets in good condition
- 1 antiquated climbing structure in fair condition
- play structures in good condition
- 1 challenge course with overhead glider in good condition

Sports Equipment

- 7 soccer fields with goals in good to fair condition
- 2 net structures in good condition

Vegetation

- Abundant mature shade trees in good condition
- Turfgrass in good to fair condition

Lighting

- Limited to pavilion/concessions/restrooms buildings

Access

- Limited to road entrance on Weaver St.; heavily impacted when facilities are busy
- Gravel-paved parking lots pose some challenges



EDISON PARK



Current Conditions

Amenities

- 11 picnic tables in varying conditions
- 2 park benches in good condition
- 1 grill, multiple trash barrels in good condition
- 3 water fountains in varying conditions and styles
- 3 portable toilets
- 1 highly visible working maintenance yard in (visually) poor condition

Play Equipment

- 2 aged swingsets in fair condition
- 1 antiquated metal merry-go-round in fair condition

Sports Equipment

- 3 ballfields in fair to poor condition
- Backstops, fencing, and dugouts in fair to poor condition
- Metal bleachers with awnings in good to fair condition
- Basketball court with chainlink backstop fencing in good condition
- 2 Sand volleyball courts in good condition
- 1 basic soccer field in fair condition

Vegetation

- 11 shade trees in varying conditions
- Turfgrass in fair condition

Lighting

- 1 pole floodlight on timer at basketball court
- 2 pole floodlights on timers at volleyball courts
- Full field lighting at ballfields

Access

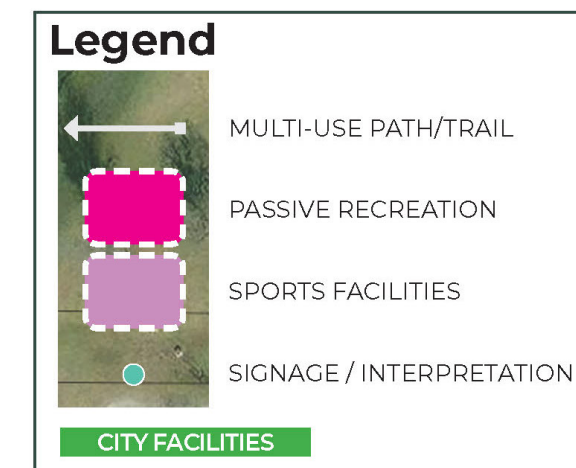
- No sidewalks or accessible paths





PARK RECOMMENDATION CONCEPT DIAGRAMS

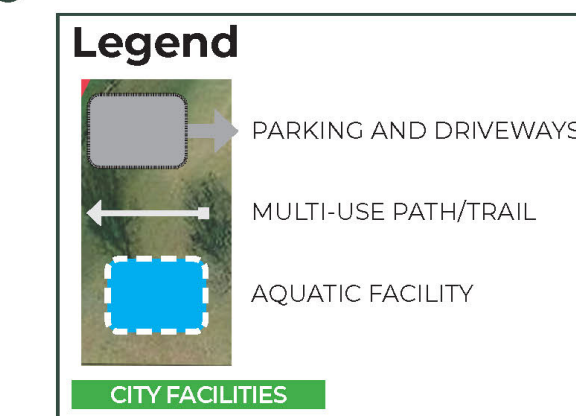
CONCEPTUAL DIAGRAM: MOFFETT PARK RECOMMENDATIONS



MOFFETT PARK:

- Connect to Zoo/Leonard Park with California St. undercrossing shared use trail
- Increase active recreation with a basketball court
- Support passive recreation with a looped nature trail, interpretive signage on natural/cultural site heritage, and park benches
- Explore potential of expanding north to W Scott St. to add wooded natural area

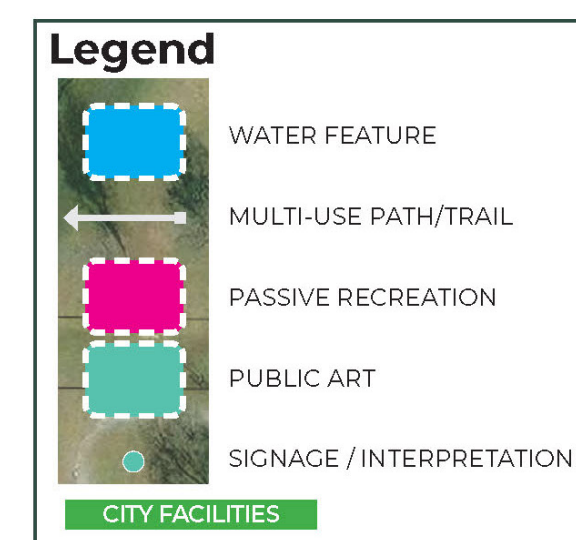
CONCEPTUAL DIAGRAM: LEONARD PARK RECOMMENDATIONS



LEONARD PARK:

- Southward expansion is needed to address zoo upgrades
- Connect to Moffett Park with California St. undercrossing shared use trail
- Increase parking to address growing zoo, park and aquatic needs
- Phase out baseball fields to accommodate zoo upgrades, parking and/or community outdoor event venue space
- Leonard Park should anchor a paved shared use greenway along Elm Fork connecting to Keneteso Park; a trail spur to the west through the city access road would provide convenient access to neighborhoods which are currently cut off from the park
- Off-road (a.k.a. mountain biking) facilities are well suited to bottomlands along waterways like Elm Fork; Leonard Park would be a promising anchor for the first such facilities in Cooke County

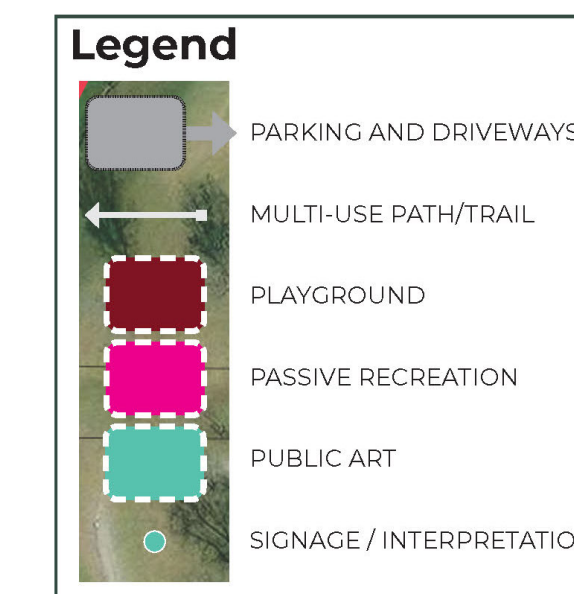
CONCEPTUAL DIAGRAM: HERITAGE PARK SOUTH RECOMMENDATIONS



HERITAGE PARK SOUTH

- Add public art, plaza, water feature and tree lighting to address safety and activate space
- Restore or replace mosaic with new public art (possibly integrate a water element)
- Create a small outdoor classroom or staging venue for educational, artistic and other community events
- Implement pedestrian crossing improvements on California St.

CONCEPTUAL DIAGRAM: BOOKER T. WASHINGTON PARK RECOMMENDATIONS



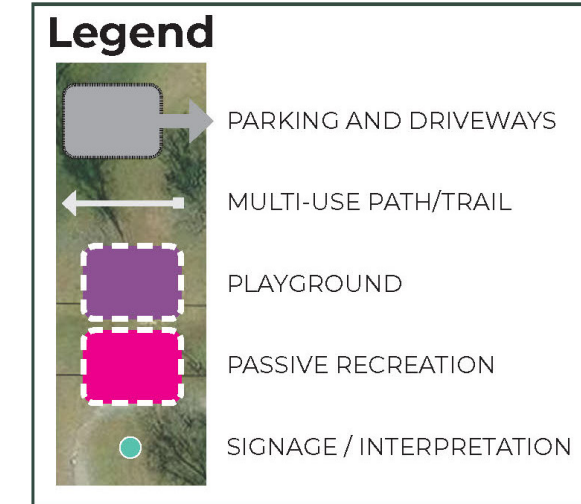
BOOKER T. WASHINGTON PARK

- Engage community to acknowledge site heritage
- Add community garden facilities
- Add play facilities in support of the adjacent childcare facility
- Add parking and access / circulation paths



PARK RECOMMENDATION CONCEPT DIAGRAMS

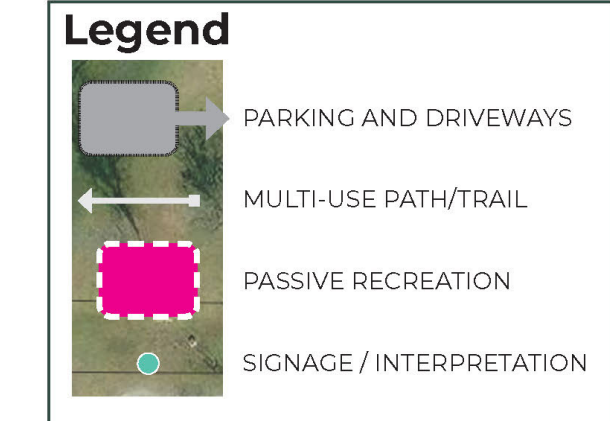
CONCEPTUAL DIAGRAM: B.P. DOUGLAS PARK RECOMMENDATIONS



B.P. DOUGLAS PARK:

- ▶ Playground improvements should target underserved age groups.
- ▶ Add backdrop native plant garden to BP Douglas Monument.

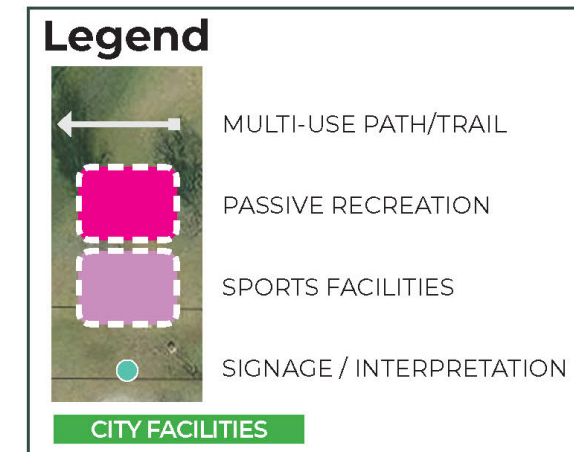
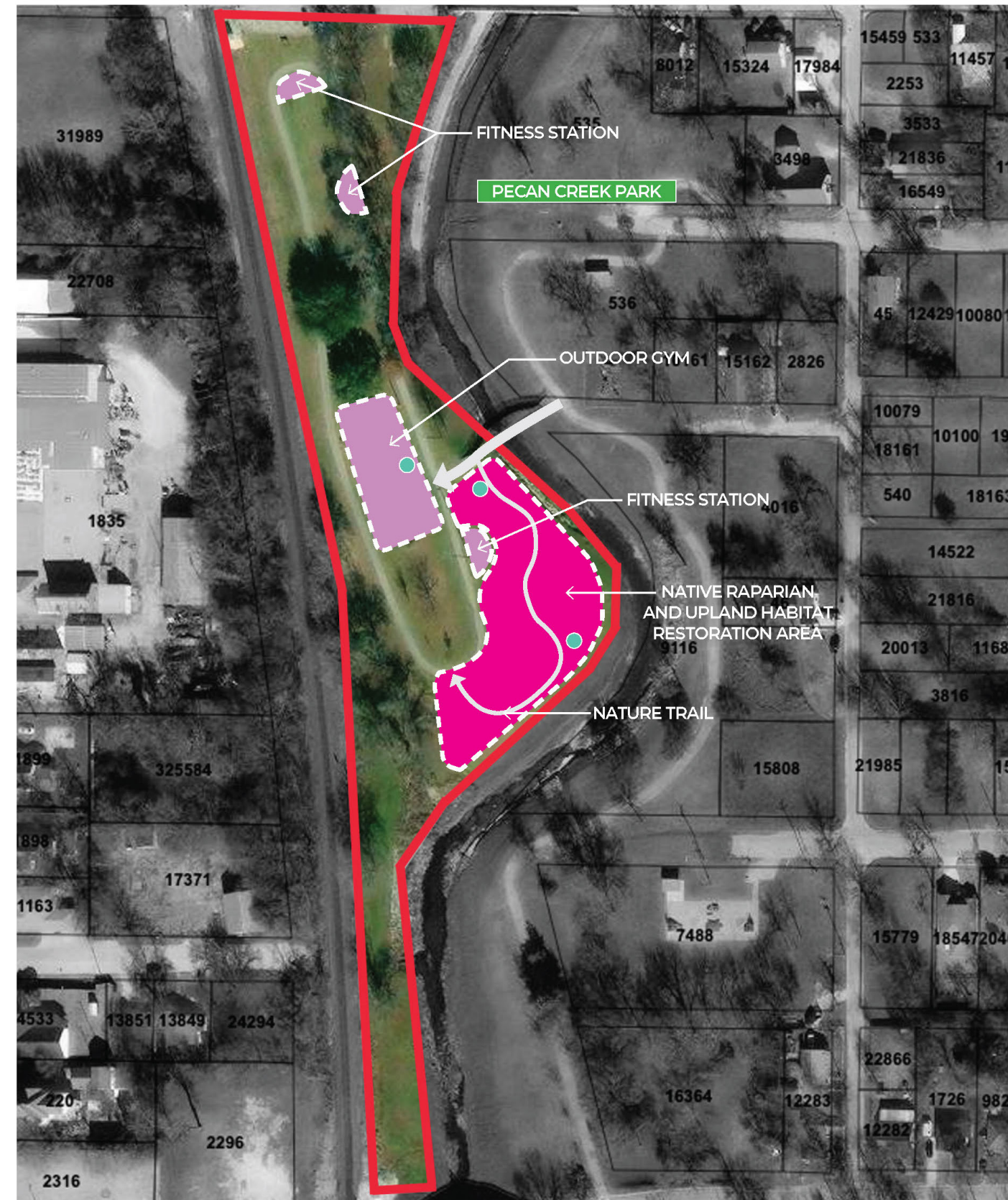
CONCEPTUAL DIAGRAM: GEORGIA BASS MEMORIAL PARK RECOMMENDATIONS



GEORGIA BASS PARK:

- ▶ Add off-street parking
- ▶ Add paths for increased accessibility
- ▶ Add garden plantings to enhance sitting/viewing area

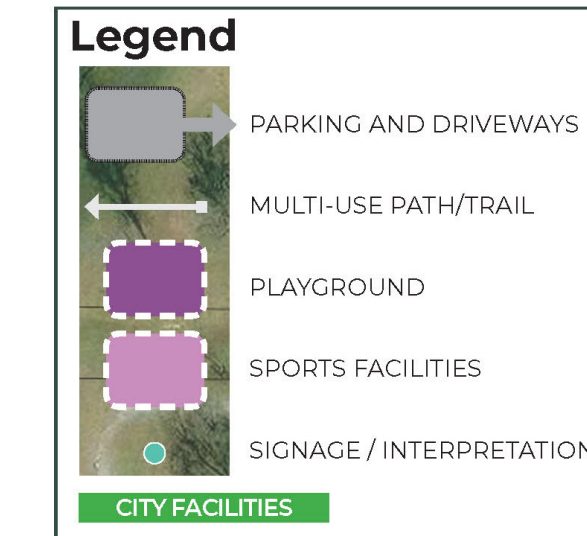
CONCEPTUAL DIAGRAM: JAYCEE PARK RECOMMENDATIONS



JAYCEE PARK

- ▶ Upgrade loop fitness facilities to an outdoor gym for teens and adults
- ▶ Develop native habitat restoration area and interpretive nature trail

CONCEPTUAL DIAGRAM: PECAN CREEK PARK RECOMMENDATIONS



PECAN CREEK PARK:

- ▶ Replace playground equipment to include all age groups
- ▶ Rebrand as a greenbelt with interpretive learning stations
- ▶ Add paved, accessible parking, pedestrian access and circulation paths



PARK RECOMMENDATION CONCEPT DIAGRAMS

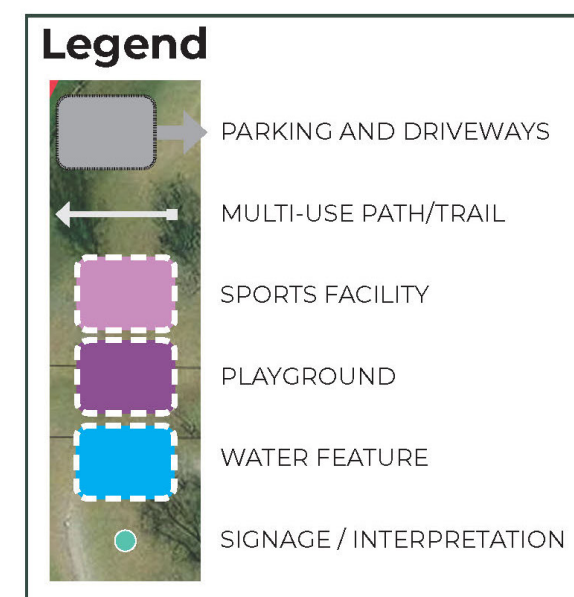
CONCEPTUAL DIAGRAM: HERITAGE PARK NORTH RECOMMENDATIONS



HERITAGE PARK NORTH

- Reconfigure Denison St. as a low-speed one-way pedestrianized Shared Street ("woonerf") to address access safety issues along the dog park
- Extend fencing of small-dog area northwards to increase capacity
- Extend existing shade structure
- Add new dog play equipment (preferably railroad-themed)

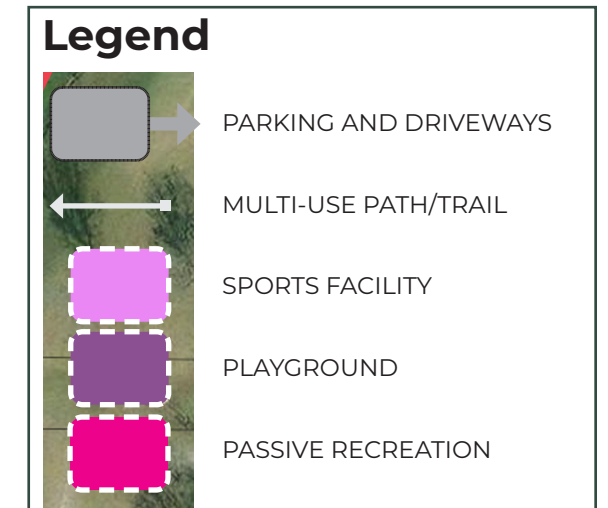
CONCEPTUAL DIAGRAM: EDISON PARK RECOMMENDATIONS



EDISON PARK:

- Create new playground facility and rearrange tables, benches, grills, playground equipment to shaded areas.
- Increase active recreation by expanding the basketball courts, adding pickleball courts, outdoor fitness stations and walking/joggy paths
- Add a restroom to serve the playground and active/sports facilities
- Increase parking capacity
- Identify phase-out of ballfields synchronized to cemetery expansion
- Based on cemetery demand projections and ballfield phaseout timeline, overhaul any remaining acreage as a primarily passive recreation facility in support of the cemetery experience
- New trees planted now will benefit the cemetery experience later; follow existing pattern and focus on extension of north-south cemetery alley

CONCEPTUAL DIAGRAM: KENETESO PARK RECOMMENDATIONS



KENETESO PARK:

- Develop regional sports complex by adding softball and baseball fields as existing fields are phased out in other parks
- Continue developing regional soccer uses (create permanent fields and spectator accommodations)
- Connect to Leonard Park via an Elm Fork Greenway with shared use path, providing fishing and put-in facilities where suitable
- Provide a network of walking loops, trails, water access amenities and picnic areas
- Develop full-scale disc golf course
- Add camping, RV and picnic amenities



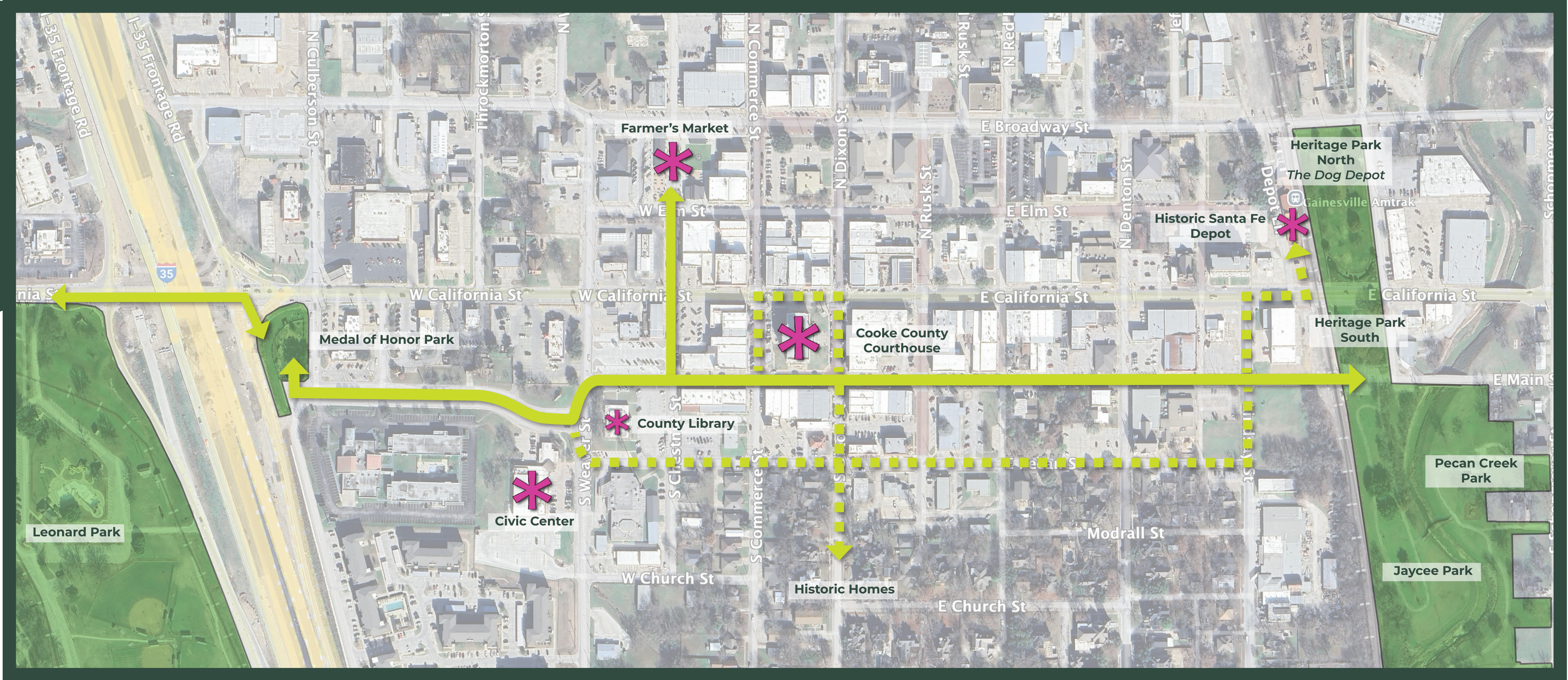
Legend

ENHANCED STREETScape, PRIMARY

ENHANCED STREETScape, SECONDARY

PUBLIC PARK

COMMUNITY / CULTURAL LANDMARK



DOWNTOWN GREEN CORRIDOR

Downtown Gainesville is blessed with a number of parks in close proximity to the central business core- it is anchored on the west by Leonard Park (including the Frank Buck Zoo and the swimming pool) and the Medal of Honor Park. A cluster of open spaces, including Heritage and Pecan Creek Parks anchor the eastern edge. A green corridor is envisioned connecting the two ends with enhanced streetscape design and thoughtful plantings, paving, lighting and site furnishings. This would serve as a pedestrian-friendly link between these important recreation opportunities- a pedestrian promenade. Additionally, this corridor would provide direct access to other important community functions and cultural landmarks such as the Community Center and the historic courthouse square. There are many other opportunities to branch off to other important locations and the many businesses, services and historic homes in the downtown area.

